



WHITE BEAR LAKE AREA SCHOOLS



SCHOOL BOARD UPDATE

School Board Meeting

April 26, 2021



White Bear Lake
Area Schools



SCHOOL BOARD UPDATE PRESENTATION AGENDA



- District Strategic Vision
- Design Process and Project Timelines
- Plans + Design
- Community Investment
- Next Steps



District Strategic Vision

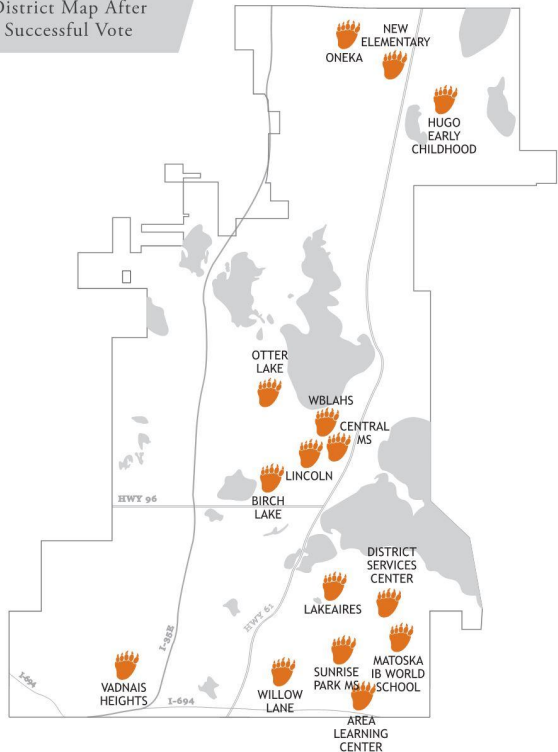
- We will ensure that **each student** is the **primary agent** in their learning.
- We will provide expanding access to a **broad range of opportunities** for all students.
- We will foster **community engagement** and **partnerships**.
- We will build **organizational capacity**.
- We will **embrace all cultures** with humility and respect.
- We will ensure **learning environments enhance students' educational experience**.
- We will **engage families** as partners in the education of their children.
- We will ensure the **social and emotional growth** of each student.
- We will **imagine new concepts in learning and teaching** at White Bear Lake Area High School.

Referendum Projects Scope



WHITE BEAR LAKE AREA SCHOOLS

District Map After Successful Vote



BIRCH LAKE ELEMENTARY

- Add extended day office, conference room, one new classroom
- Updated classrooms and media center, safety/security upgrades

LAKEAIRES ELEMENTARY

- Add orchestra room and freezer
- Updated classrooms and media center, safety/security upgrades

LINCOLN ELEMENTARY

- Add full size gymnasium, conference room, extended day office and cooler
- Updated classrooms and media center, safety/security upgrades

MATOSKA ELEMENTARY

- Add freezer, specialist room, extended day office, EL room
- Updated classrooms and media center, safety/security upgrades

ONEKA ELEMENTARY

- Add 5 classrooms for capacity of 720 students
- Updated classrooms and media center, safety/security upgrades

OTTER LAKE ELEMENTARY

- Add 5 classrooms for capacity of 720 students
- Updated classrooms and media center, safety/security upgrades

VADNAIS HEIGHTS ELEMENTARY

- Add freezer, extended day office, orchestra room
- Updated classrooms and media center, safety/security upgrades

WILLOW LANE ELEMENTARY

- Add orchestra room and freezer
- Updated classrooms and media center, safety/security upgrades

NEW ELEMENTARY

- New elementary school for 720 students (new site)

CENTRAL MIDDLE SCHOOL

- Renovate District Office to create additional classroom space
- Updated classrooms and media center, safety/security upgrades

SUNRISE PARK MIDDLE SCHOOL (FORMER SOUTH CAMPUS)

- Addition/renovation to become a grades 6-8 MS, including additional gymnasium
- Updated classrooms and media center, safety/security upgrades

WBLAHS NORTH CAMPUS

- Addition / renovation to become single site grades 9-12 IHS
- Updated classrooms and media center, safety/security upgrades

AREA LEARNING CENTER

- Kitchen improvements and renovations to create secure vestibule
- Updated classrooms and media center, safety/security upgrades

HUGO EARLY CHILDHOOD CENTER

- Convert for use as North Early Childhood Center

DISTRICT SERVICES CENTER (FORMER SUNRISE PARK)

- Renovation to convert for use as South Early Childhood Center, District Office, Senior Center, and Transition Education Center

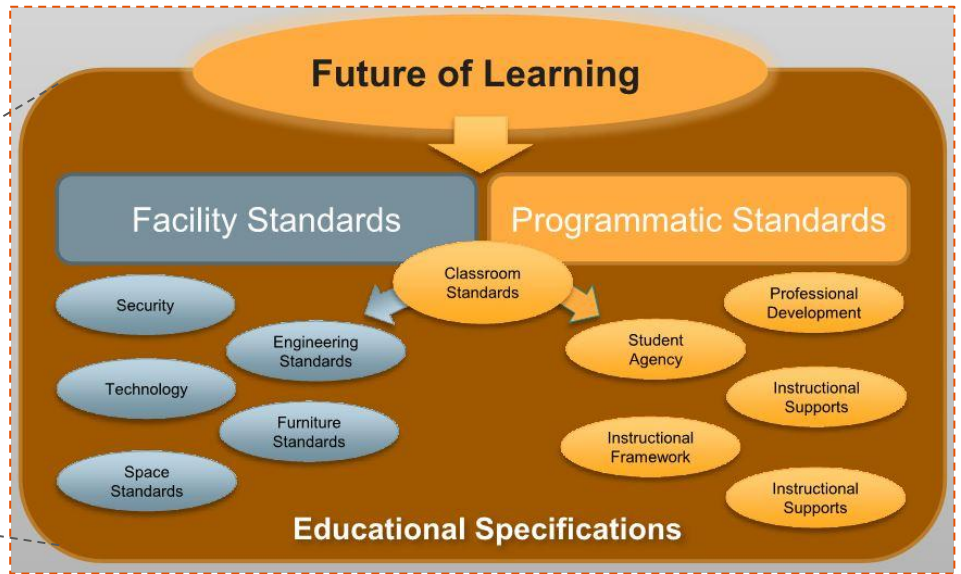
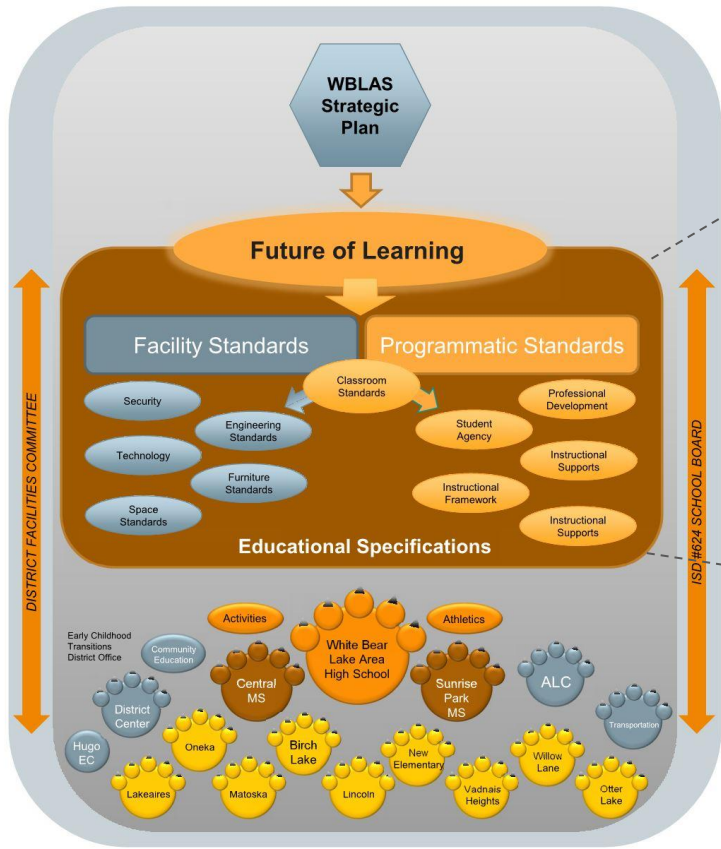
TRANSPORTATION / MAINTENANCE FACILITY

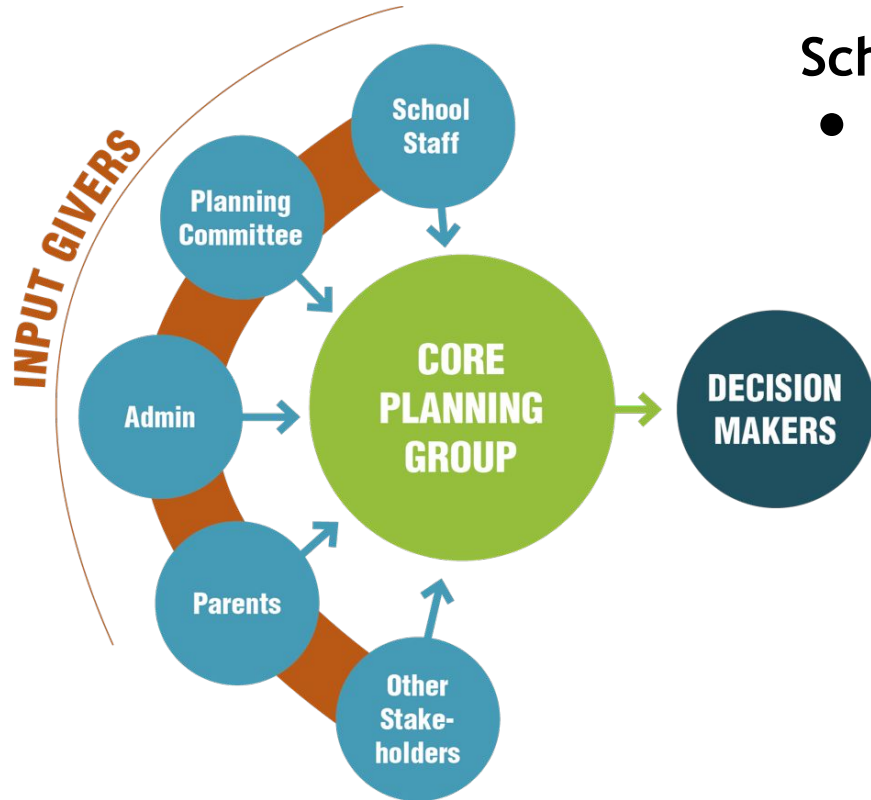
- New transportation / maintenance facility (Location TBD)

- District-wide additions and renovations to accommodate projected enrollment growth
- Safety and security improvements
- Deferred maintenance projects
- Classroom and building updates to create flexible learning spaces

Design Process and Projects Timeline







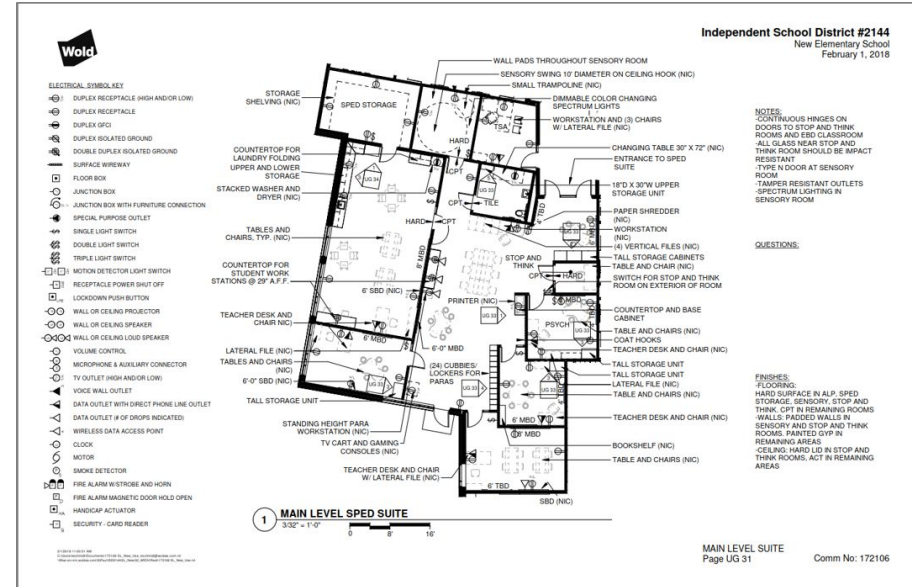
Schematic Design: Core Planning Groups

- Develop Core Planning Group for each individual building
 - Tours (Common Language)
 - Consensus on Criteria and Guiding Principles
 - Building a Common Diagram
 - Renderings / Visuals
 - Final Schematic Design

Design Process - User Groups

Design Development: User Group Process

- Involve Building Staff & Users in Details
- Every room impacted
- Builds ownership in the project
- No limit to number of meetings
- Detailed information for coordination



In the last

14

MONTHS

There have been

193

MEETINGS

Totaling about

224

HOURS

And over

215

STAKEHOLDERS!

That totals 215 people attending over 2,080 hours of meetings!

Thank you to all those who participated!



- Successful bond referendum: November 2019
- High School:
 - Design Process: January 2020 - April 2021
 - Bidding / Construction Starts: Spring/Summer 2021
 - Opens in phases over the next 4 years
- South Campus Phase II:
 - Design Process: October 2020 - April 2021
 - Bidding / Construction Starts: Spring/Summer 2021
 - Opens in phases in 2022

Project Scope:

- Additions and renovations to create a comprehensive 9-12 high school
- Upgrades and expansion to kitchen and cafeteria
- 375,000 square foot addition
- New flexible furniture
- \$225M total project cost including building and on and off site improvements




- Strategic Plan
- Future of Learning
- High School Core Planning
- High School User Groups




- Forward thinking
- Flexible
- Adaptable
- Collaborative environments
- Student agency
- Transformational
- Engaging
- Sense of community
- “Small school feel”
- Teaching & learning on display



Definitions of proposed new terms:

- **The Union** - Central gathering area of the high school which creates a sense of community for dining and gathering. Constitutes the major organizing space of the high school with connections to all major elements.
 - **Educational Team** - A team of up to 12 staff grouped around learning objectives with the intent of fostering collaboration who share a meeting space.
 - **Learning Studio** - A collection of learning spaces grouped together to enhance collaboration, innovation, and student agency.
 - **Learning Commons** - A specialized learning studio focused on media resources, technology access, and collaborative spaces as a resource to all learners.
- 
- Three overlapping orange geometric shapes (triangles and a square) are positioned in the bottom right corner of the slide.

PROJECT COMMITMENTS FROM CORE GROUP (Excerpts)

- The design will be **future-ready and forward thinking**, and adapt to the changing needs of the community over time.
 - The design will honor and embrace all cultures. It will be rooted in the **history of the area while reflecting the present culture** and WBLAS community sensibilities.
 - The building will be an **inclusive place** where learners can explore their evolving interests, and develop a sense of community. Learning studios should be organized to create a “**small-school feel**” within the high school.
 - The building and programming will **actively support student agency** while providing guidance and support in their educational journey.
 - **Special Education spaces should be distributed** to provide inclusion and opportunities for learners.
- 

Plans + Design





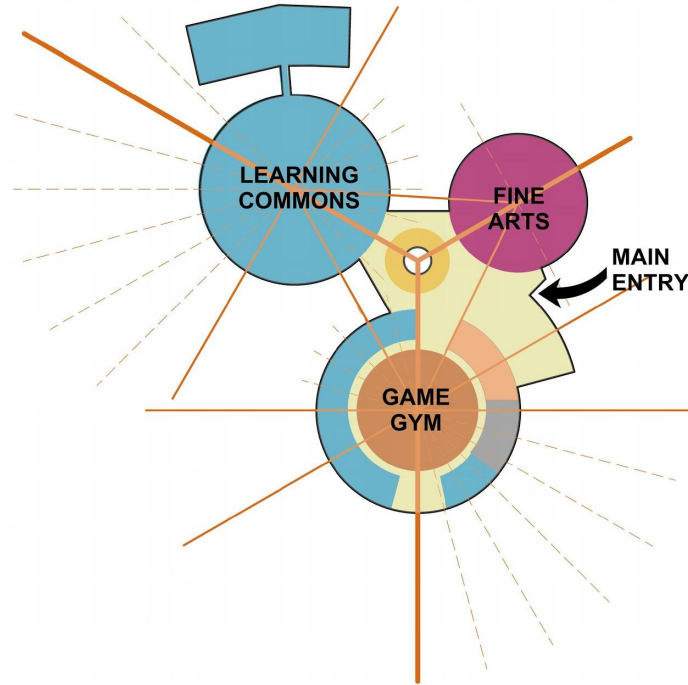
WHITE BEAR LAKE AREA HIGH SCHOOL

Floor Plan Development



WHITE BEAR LAKE AREA HIGH SCHOOL

EXISTING BUILDING





WHITE BEAR LAKE AREA HIGH SCHOOL

MAIN LEVEL FLOOR PLAN





WHITE BEAR LAKE AREA HIGH SCHOOL

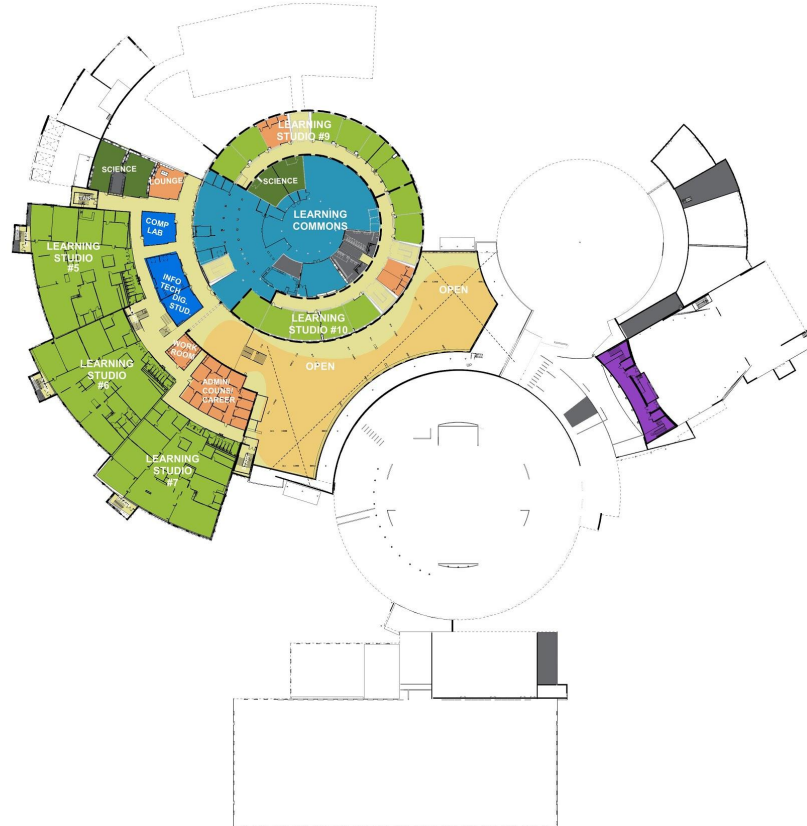
MAIN LEVEL FLOOR PLAN





WHITE BEAR LAKE AREA HIGH SCHOOL

SECOND LEVEL FLOOR PLAN





WHITE BEAR LAKE AREA HIGH SCHOOL

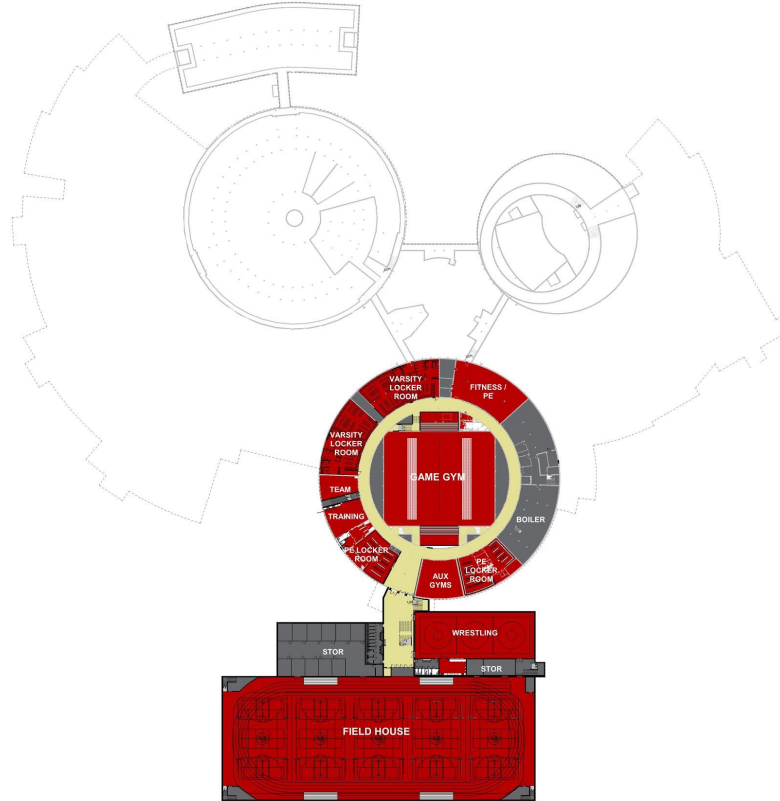
THIRD LEVEL FLOOR PLAN





WHITE BEAR LAKE AREA HIGH SCHOOL

LOWER LEVEL FLOOR PLAN





WHITE BEAR LAKE AREA HIGH SCHOOL

Concept / Design Inspiration



WHITE BEAR LAKE AREA HIGH SCHOOL

DESIGN INSPIRATION



Lakes and Ponds in District

- **Bald Eagle Lake**
- **Oneka Lake**
- **Vadnais Lake**
- **White Bear Lake**
- Amelia Lake
- Birch Lake
- Black Lake
- Egg Lake
- Gem Lake
- Gilfillan Lake
- Goose Lake
- Oak Knoll Pond
- Otter Lake
- Peppertree Ponde
- Priebe Lake
- Rice Lake
- Tamarack Lake
- Twin Lake
- Waterbury Pond
- Willow Lake



WHITE BEAR LAKE AREA HIGH SCHOOL

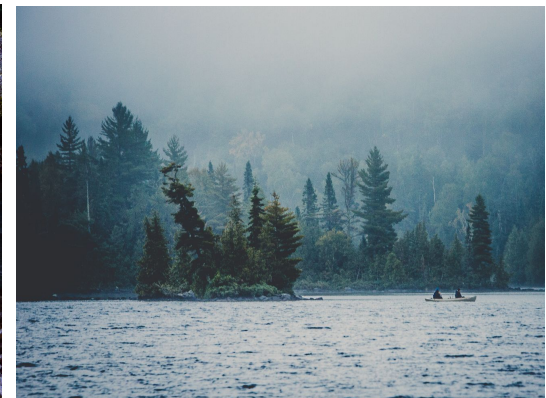
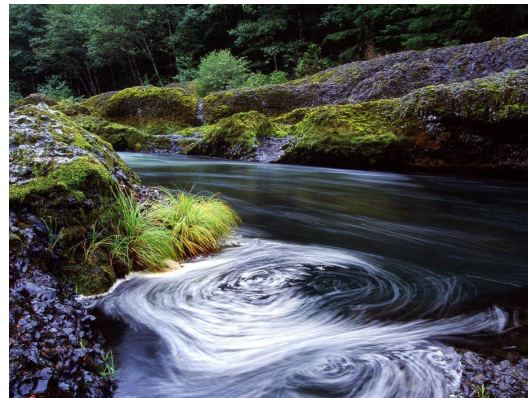
DESIGN INSPIRATION





WHITE BEAR LAKE AREA HIGH SCHOOL

DESIGN INSPIRATION





WHITE BEAR LAKE AREA HIGH SCHOOL

DESIGN INSPIRATION

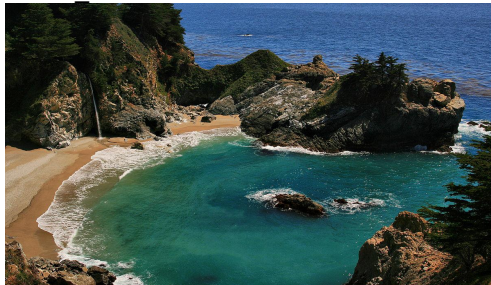


ISLANDS

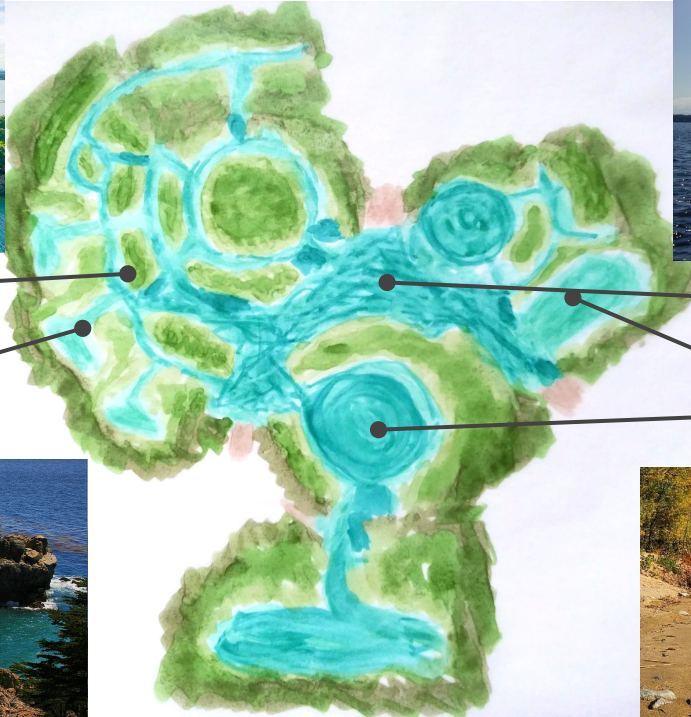


OPEN WATER

COVE



BAY





WHITE BEAR LAKE AREA HIGH SCHOOL

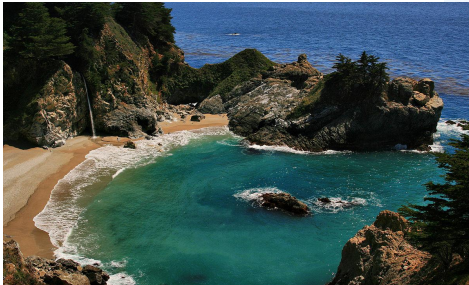
DESIGN INSPIRATION



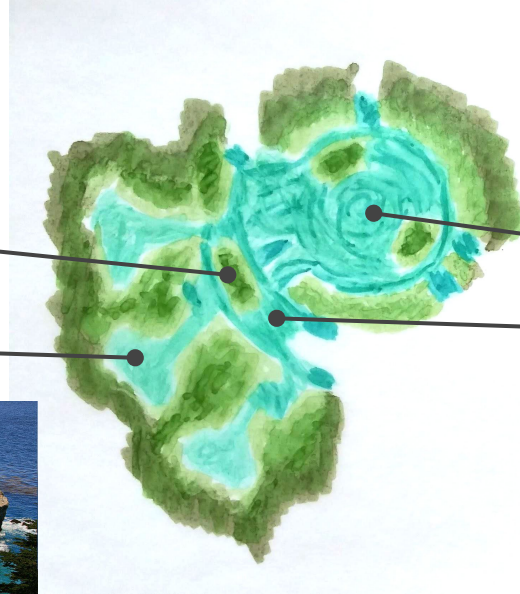
ISLANDS



BAY



COVE



OPEN WATER





WHITE BEAR LAKE AREA HIGH SCHOOL

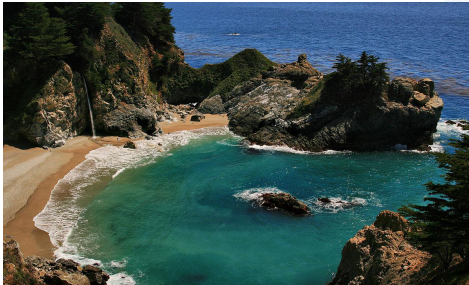
DESIGN INSPIRATION



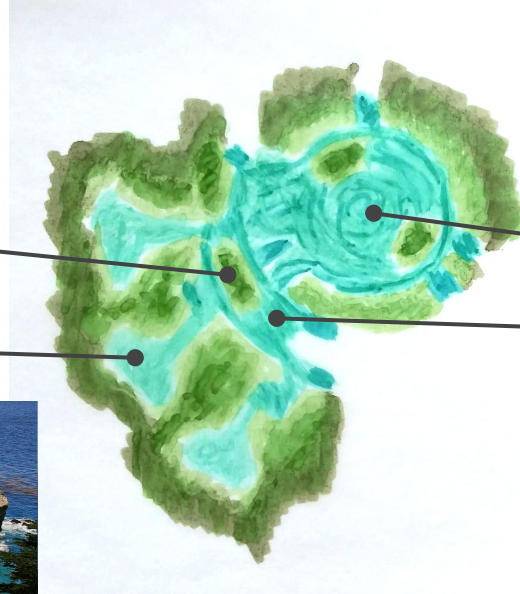
ISLANDS



BAY



COVE



OPEN WATER



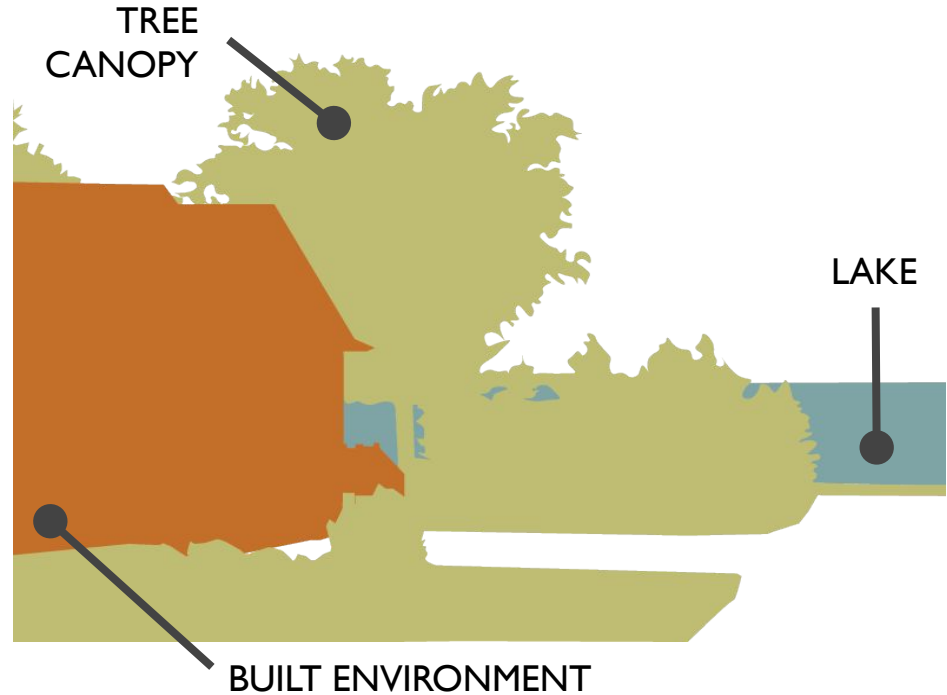


WHITE BEAR LAKE AREA HIGH SCHOOL

DESIGN INSPIRATION



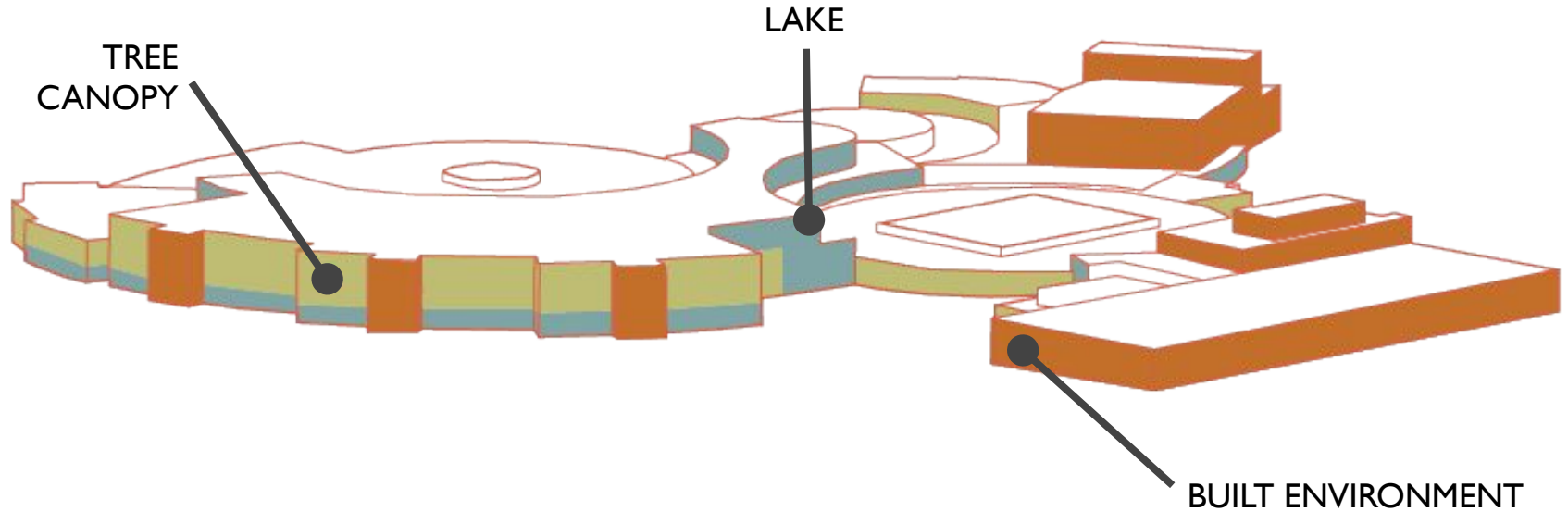
VIEW OF WHITE BEAR LAKE





WHITE BEAR LAKE AREA HIGH SCHOOL

DESIGN INSPIRATION



VIEW OF WHITE BEAR LAKE HIGH SCHOOL



WHITE BEAR LAKE AREA HIGH SCHOOL

Exterior Design

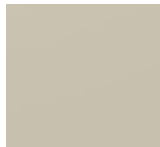


WHITE BEAR LAKE AREA HIGH SCHOOL

EXTERIOR DESIGN



BRICK



METAL PANEL

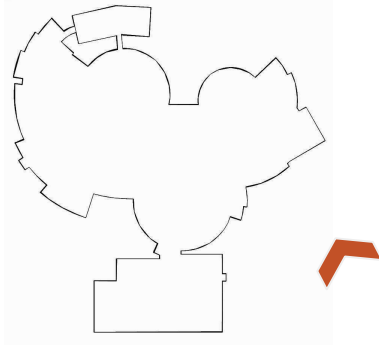


PRECAST CONCRETE



WHITE BEAR LAKE AREA HIGH SCHOOL

EXTERIOR DESIGN



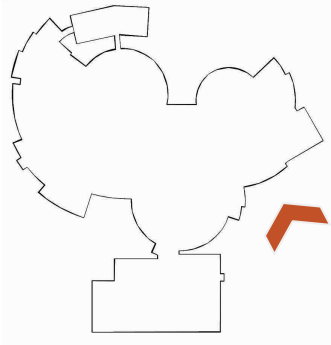
MAIN ENTRY



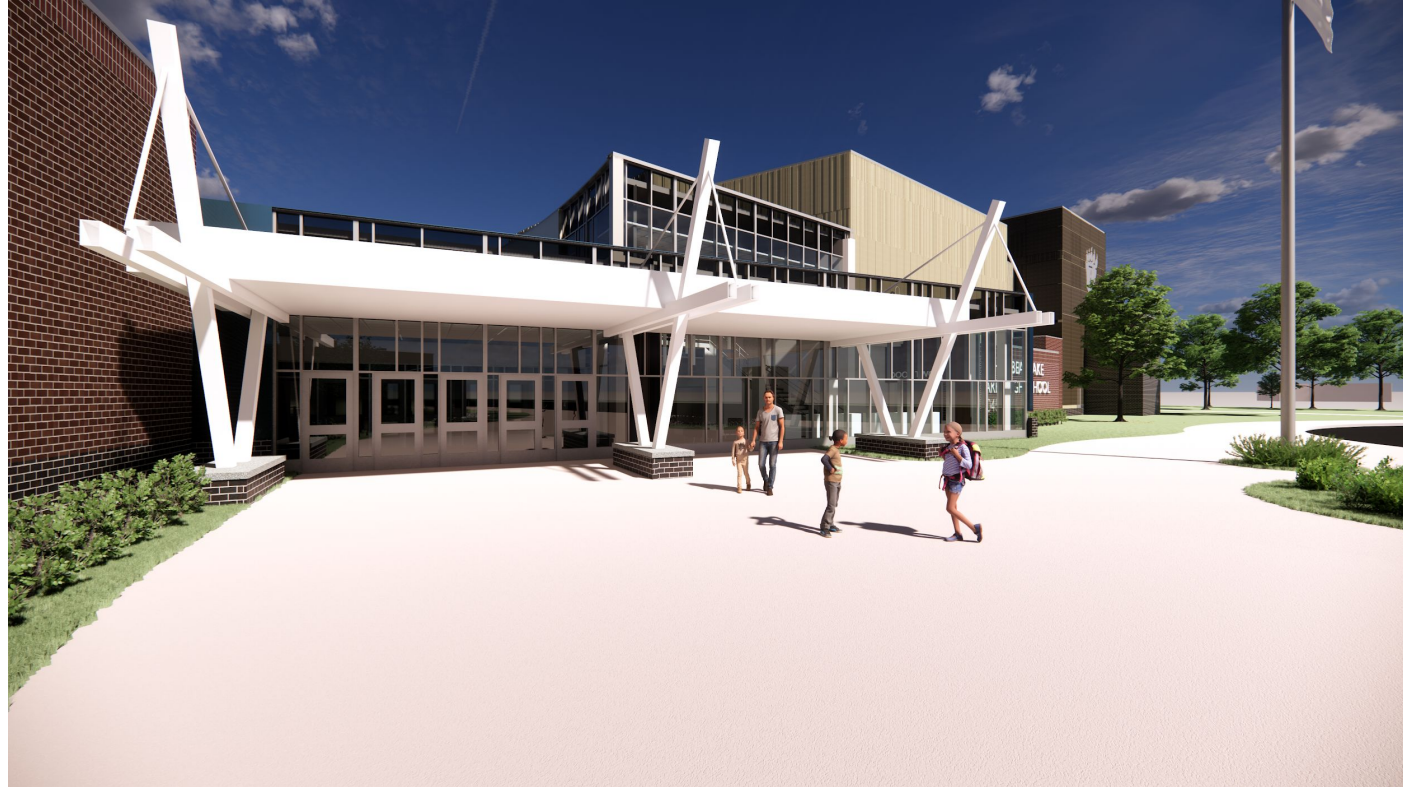


WHITE BEAR LAKE AREA HIGH SCHOOL

EXTERIOR DESIGN



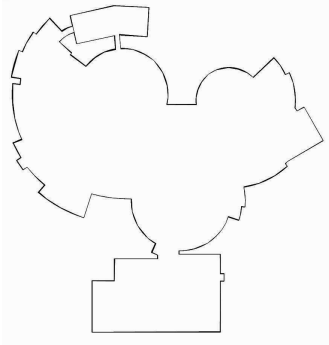
MAIN ENTRY





WHITE BEAR LAKE AREA HIGH SCHOOL

EXTERIOR DESIGN



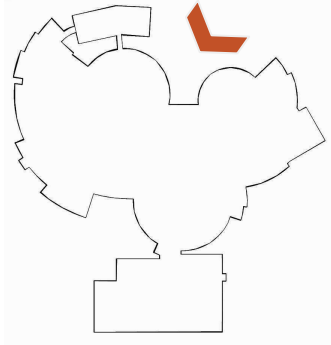
AUDITORIUM





WHITE BEAR LAKE AREA HIGH SCHOOL

EXTERIOR DESIGN



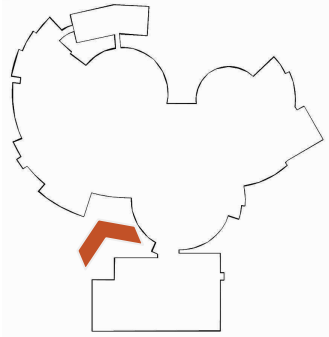
UNION PLAZA





WHITE BEAR LAKE AREA HIGH SCHOOL

EXTERIOR DESIGN



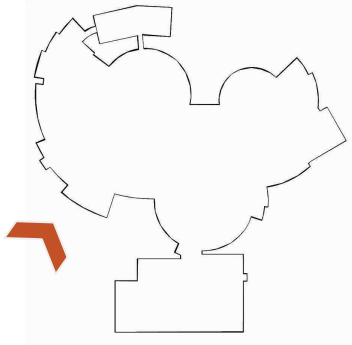
STUDENT ENTRY





WHITE BEAR LAKE AREA HIGH SCHOOL

EXTERIOR DESIGN



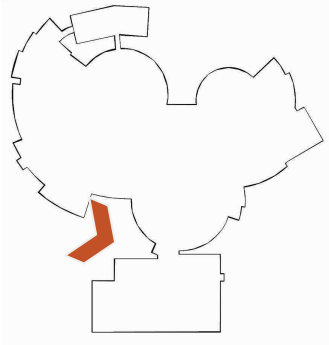
LEARNING STUDIOS





WHITE BEAR LAKE AREA HIGH SCHOOL

EXTERIOR DESIGN



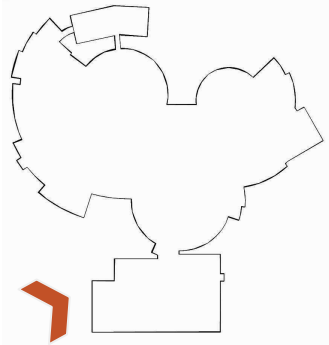
ATHLETICS ENTRY





WHITE BEAR LAKE AREA HIGH SCHOOL

EXTERIOR DESIGN



FIELD HOUSE





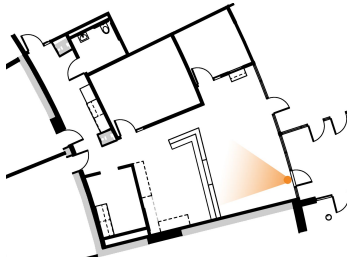
WHITE BEAR LAKE AREA HIGH SCHOOL
INTERIOR DESIGN

Interior Design



WHITE BEAR LAKE AREA HIGH SCHOOL

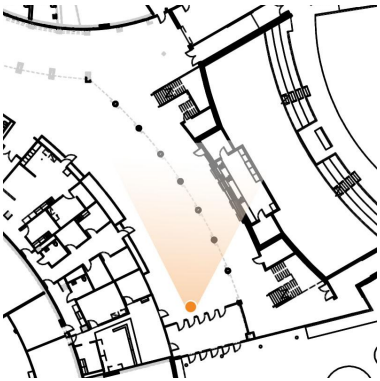
INTERIOR DESIGN





WHITE BEAR LAKE AREA HIGH SCHOOL

INTERIOR DESIGN



MAIN ENTRY - AUDITORIUM LOBBY



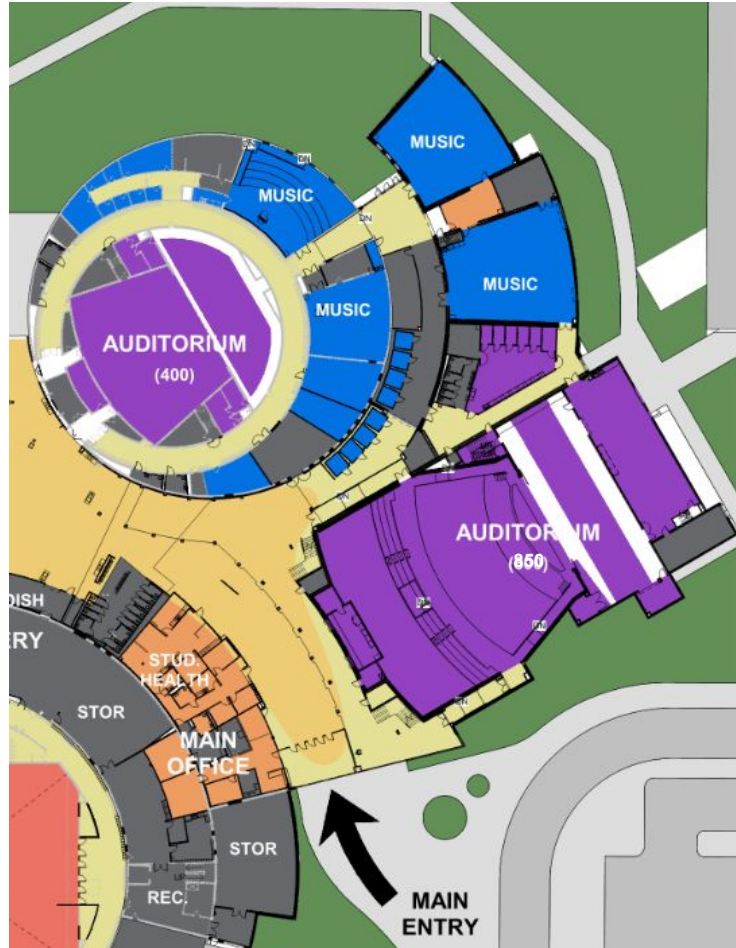
WHITE BEAR LAKE AREA HIGH SCHOOL

INTERIOR DESIGN



MAIN ENTRY - CREST VIEW

WHITE BEAR LAKE AREA HIGH SCHOOL INTERIOR DESIGN



- 850 Seats
- Dressing Room
- Full fly loft
- Designed for Music and Theater
- New Scene Shop
- Investment in new and existing music spaces



WHITE BEAR LAKE AREA HIGH SCHOOL

INTERIOR DESIGN



AUDITORIUM INSPIRATION

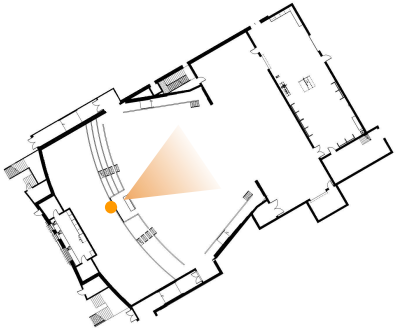


WHITE BEAR LAKE AREA HIGH SCHOOL

INTERIOR DESIGN



AUDITORIUM - VIEW OF STAGE



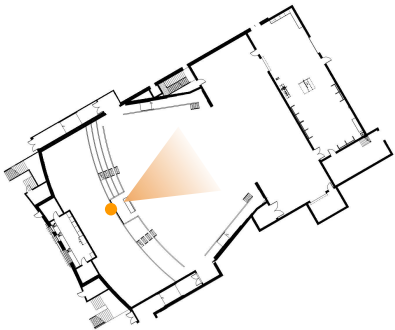


WHITE BEAR LAKE AREA HIGH SCHOOL

INTERIOR DESIGN



AUDITORIUM - VIEW OF STAGE



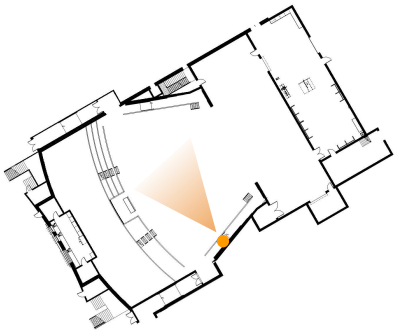


WHITE BEAR LAKE AREA HIGH SCHOOL

INTERIOR DESIGN



AUDITORIUM - SIDE VIEW



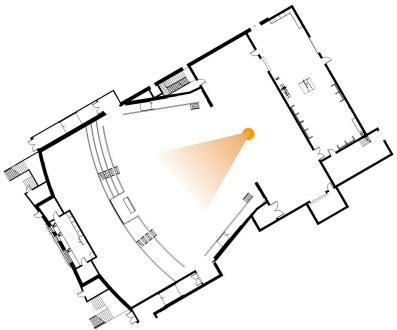


WHITE BEAR LAKE AREA HIGH SCHOOL

INTERIOR DESIGN



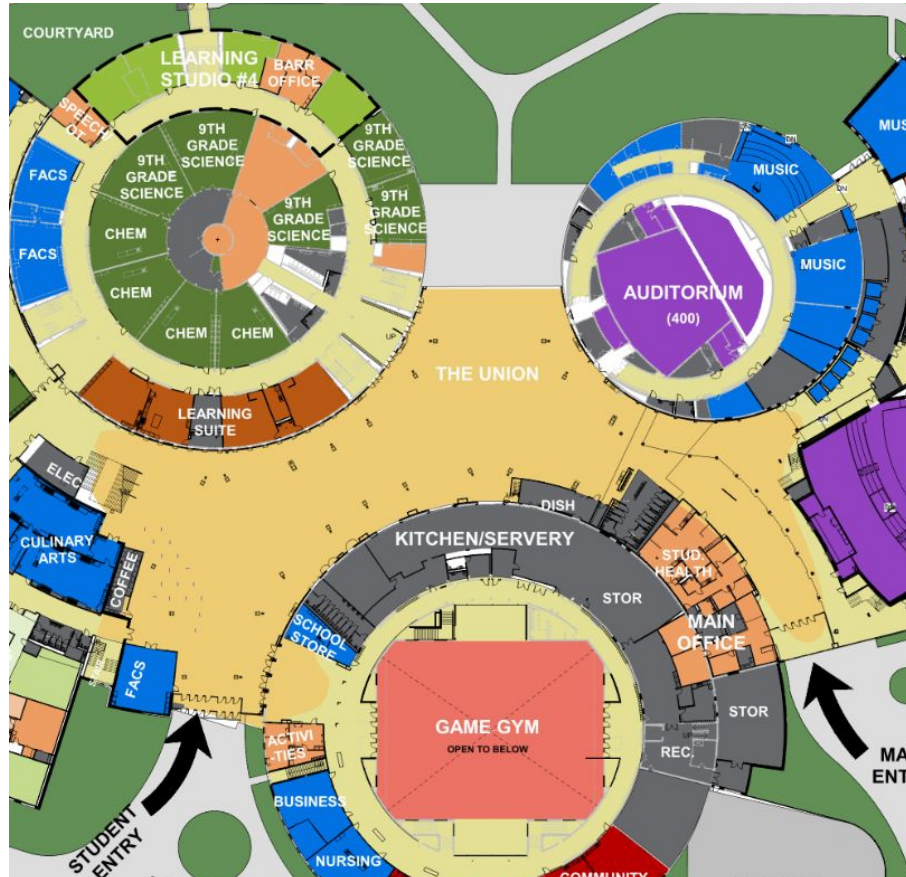
AUDITORIUM - VIEW FROM STAGE





WHITE BEAR LAKE AREA HIGH SCHOOL

INTERIOR DESIGN



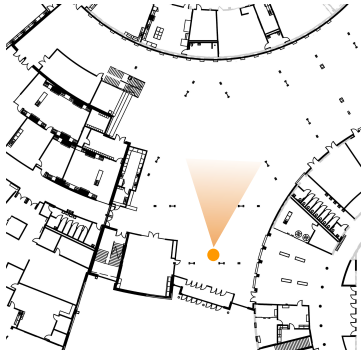
- Central Gathering Space
- 3- Story Space
- Abundant Natural Light
- Designed for up to 1100 students per lunch
- Outdoor Plaza to North
- Student-Run Coffee Shop
- Presentation Area
- Expanded Kitchen and Central Food Service

THE UNION



WHITE BEAR LAKE AREA HIGH SCHOOL

INTERIOR DESIGN



THE UNION

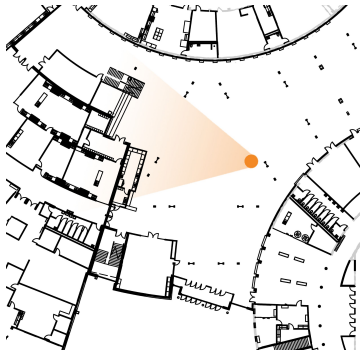


WHITE BEAR LAKE AREA HIGH SCHOOL

INTERIOR DESIGN



THE UNION





WHITE BEAR LAKE AREA HIGH SCHOOL

INTERIOR DESIGN





WHITE BEAR LAKE AREA HIGH SCHOOL

INTERIOR DESIGN

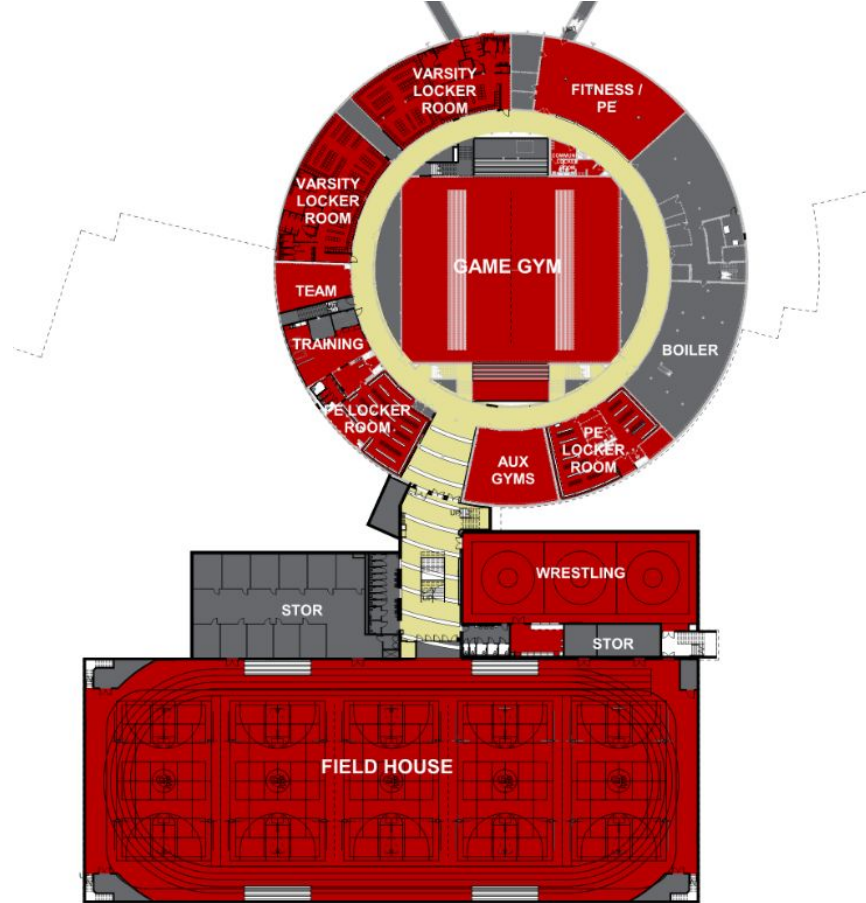


THE UNION



WHITE BEAR LAKE AREA HIGH SCHOOL

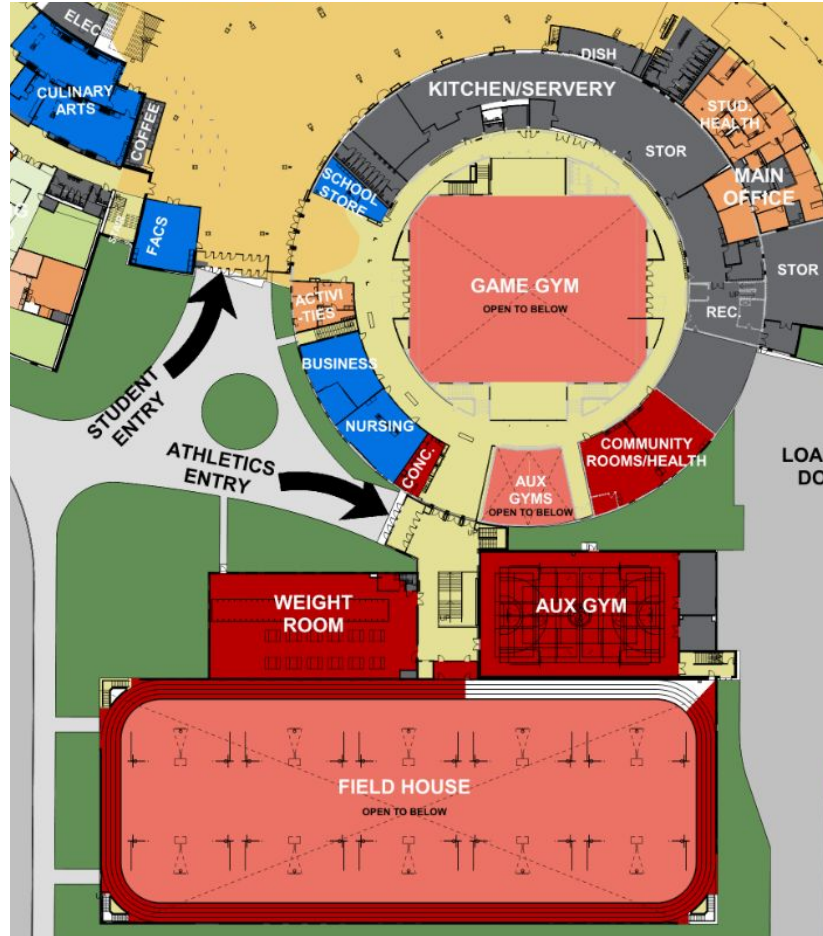
INTERIOR DESIGN



- Expanded Game Gym Bleacher Seating to 1900
- New 5-court fieldhouse
- New Wrestling Room
- Renovated PE + Athletics Locker Rooms with privacy changing stalls
- Training and Team Rooms
- Additional SF of Storage

WHITE BEAR LAKE AREA HIGH SCHOOL

INTERIOR DESIGN

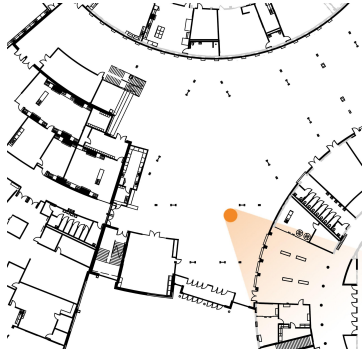


- Connection to the Union
- Concourse with views to lower court level
- Dedicated athletics entry
- Elevated walking track with natural light
- New Weight Room and Auxiliary Gym
- Concessions



WHITE BEAR LAKE AREA HIGH SCHOOL

INTERIOR DESIGN

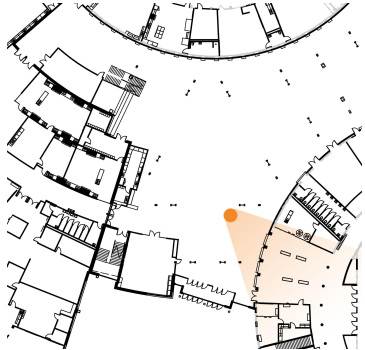


GAME GYM ENTRY



WHITE BEAR LAKE AREA HIGH SCHOOL

INTERIOR DESIGN

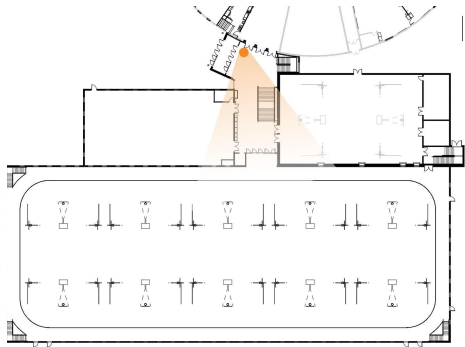


GAME GYM ENTRY INTERIOR VIEW



WHITE BEAR LAKE AREA HIGH SCHOOL

INTERIOR DESIGN

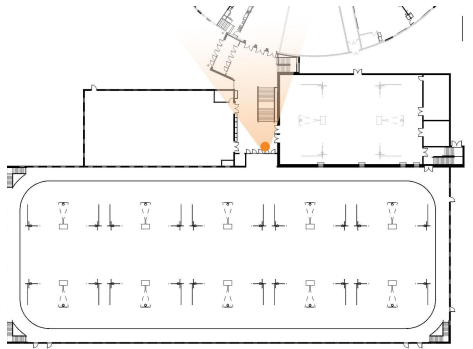


ATHLETIC LOBBY - MAIN LEVEL



WHITE BEAR LAKE AREA HIGH SCHOOL

INTERIOR DESIGN

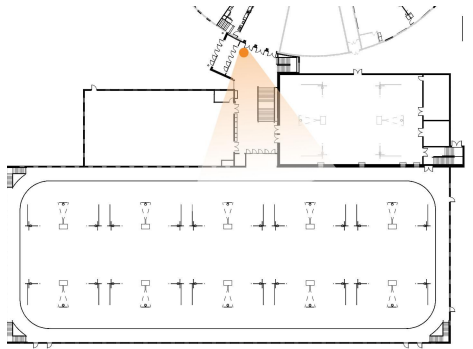


ATHLETIC LOBBY - MAIN LEVEL



WHITE BEAR LAKE AREA HIGH SCHOOL

INTERIOR DESIGN

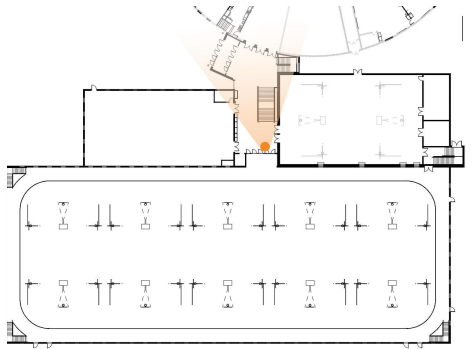


ATHLETIC LOBBY - LOWER LEVEL



WHITE BEAR LAKE AREA HIGH SCHOOL

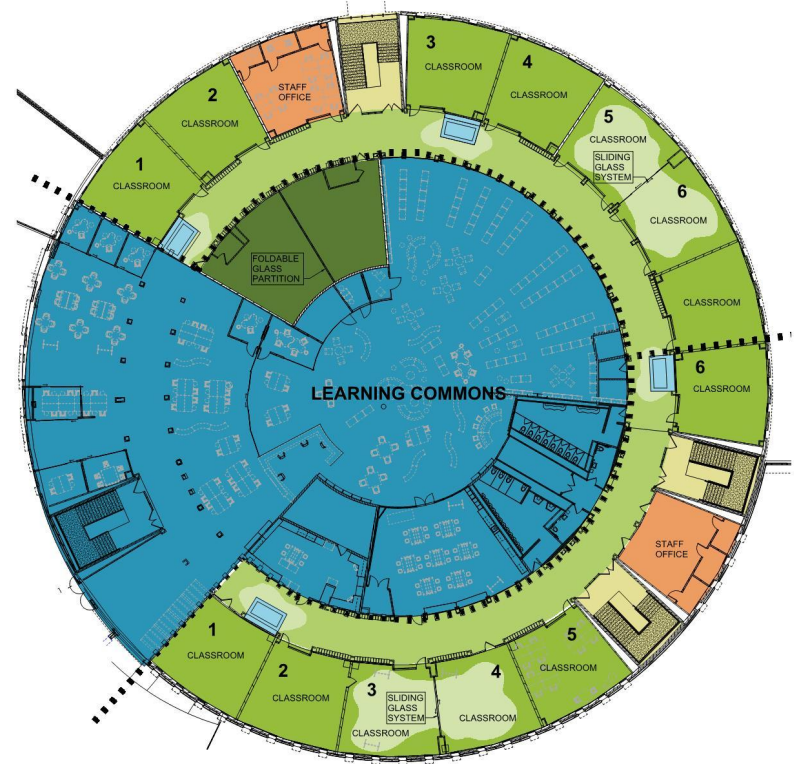
INTERIOR DESIGN



ATHLETIC LOBBY - LOWER LEVEL



WHITE BEAR LAKE AREA HIGH SCHOOL NEW AND EXISTING LEARNING STUDIOS





White Bear Lake
Area Schools

WHITE BEAR LAKE AREA HIGH SCHOOL

LEARNING STUDIO DIAGRAM

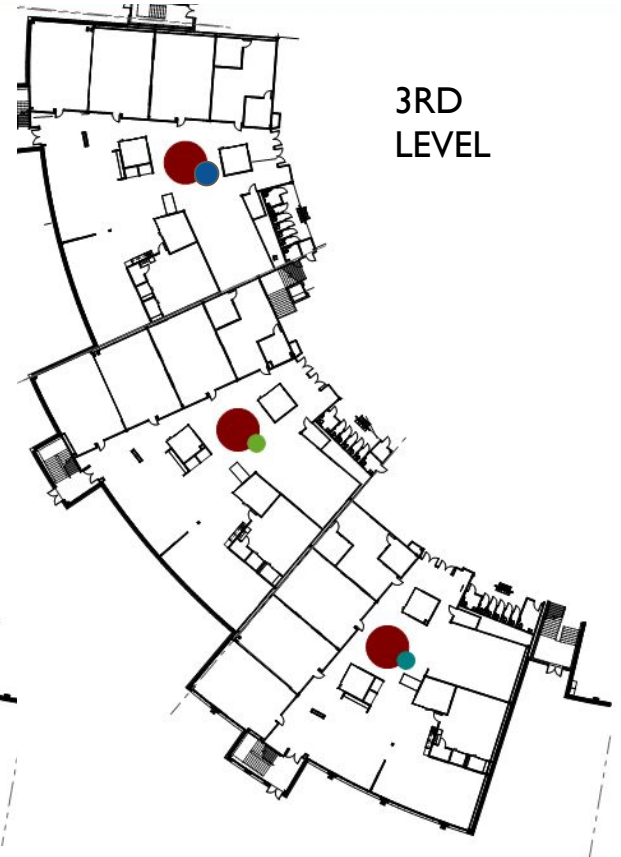
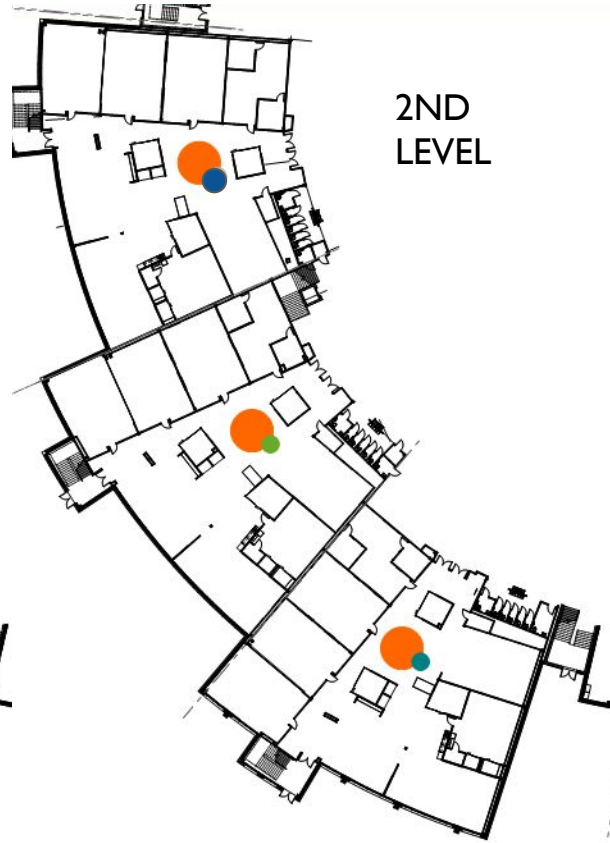
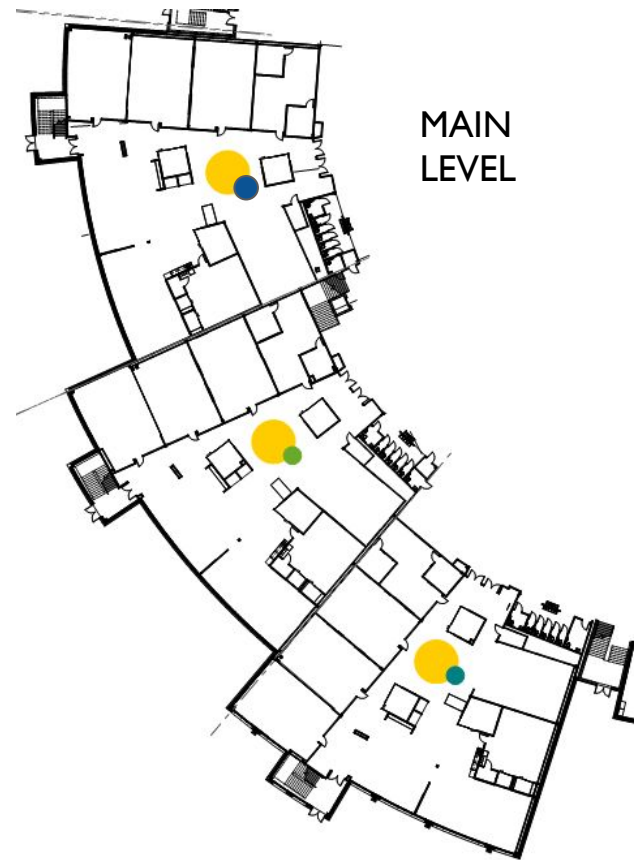


- Home base for staff and students
- Small-school feel + community
- 6 capacity classrooms
- Integrated Student Services space
- Flexible spaces support student agency and differentiated learning
- Dedicated professional Staff Office
- Variety of spaces:
 - Conference rooms
 - Individual work
 - Small group
 - Collaborative porch



WHITE BEAR LAKE AREA HIGH SCHOOL

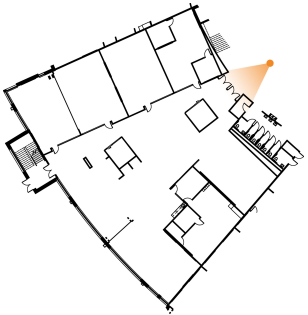
INTERIOR DESIGN





WHITE BEAR LAKE AREA HIGH SCHOOL

INTERIOR DESIGN



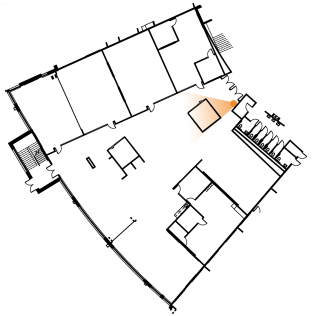


WHITE BEAR LAKE AREA HIGH SCHOOL

INTERIOR DESIGN



LEARNING STUDIO - VIEW INSIDE ENTRY





WHITE BEAR LAKE AREA HIGH SCHOOL

INTERIOR DESIGN



LEARNING STUDIO - RESOURCE SPACE





WHITE BEAR LAKE AREA HIGH SCHOOL

INTERIOR DESIGN



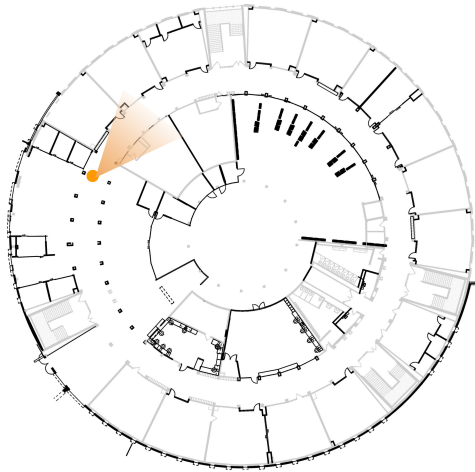
LEARNING STUDIO - OPEN CLASSROOMS





WHITE BEAR LAKE AREA HIGH SCHOOL

INTERIOR DESIGN



LEARNING STUDIO - CIRCULATION CONNECTION



WHITE BEAR LAKE AREA HIGH SCHOOL

CAREER PATHWAYS / ISLANDS



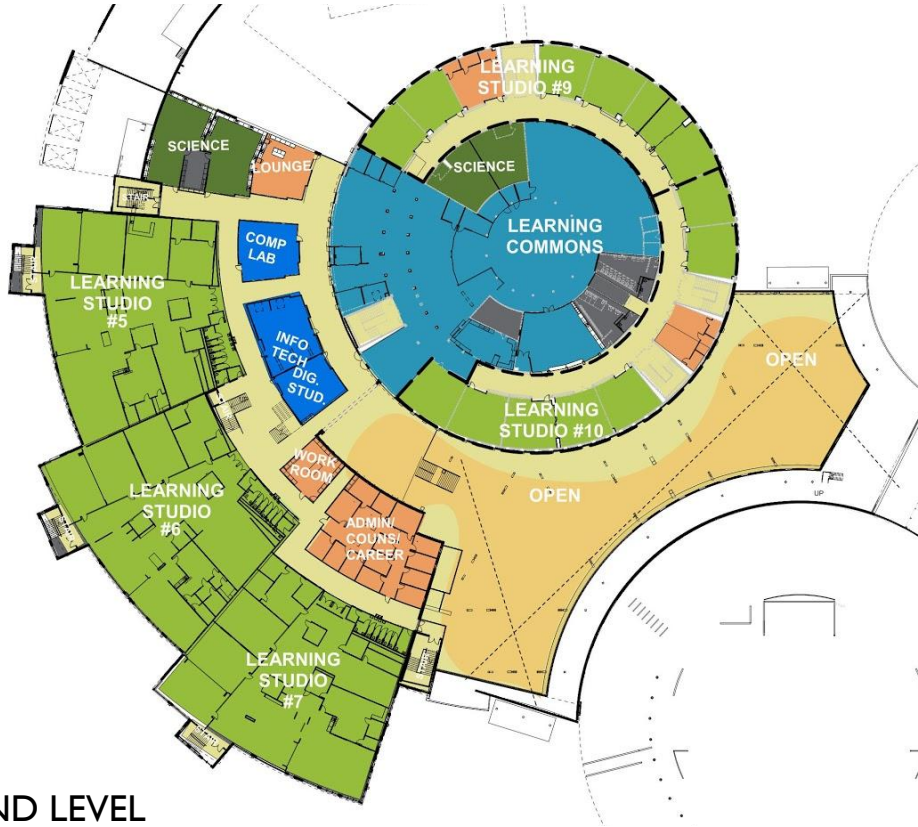
- Connects new addition and existing building, cohesive feel
- Learning on display
- Specialized spaces provide hands-on, real-world experiences for students
- Future-ready, innovative
- Community partnerships and opportunities

MAIN LEVEL



WHITE BEAR LAKE AREA HIGH SCHOOL

CAREER PATHWAYS / ISLANDS



SECOND LEVEL



WHITE BEAR LAKE AREA HIGH SCHOOL

CAREER PATHWAYS / ISLANDS

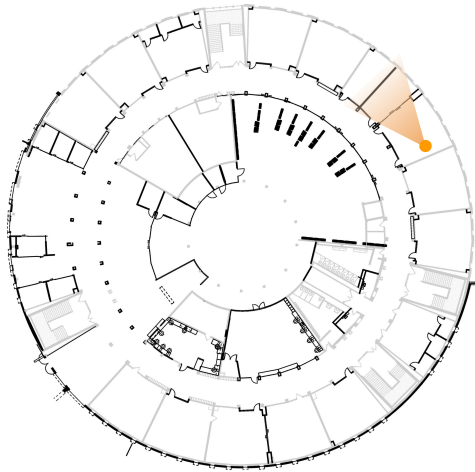


THIRD LEVEL



WHITE BEAR LAKE AREA HIGH SCHOOL

INTERIOR DESIGN



LEARNING STUDIO - CLASSROOM

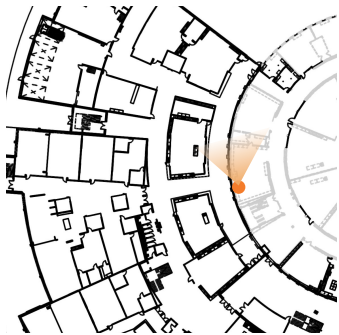


WHITE BEAR LAKE AREA HIGH SCHOOL

INTERIOR DESIGN



ISLANDS - SPECIALTY SPACES



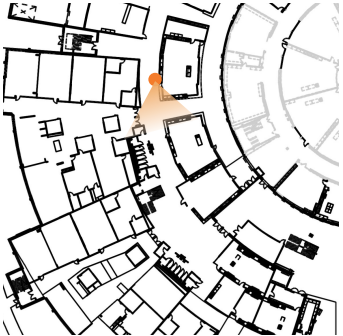


WHITE BEAR LAKE AREA HIGH SCHOOL

INTERIOR DESIGN



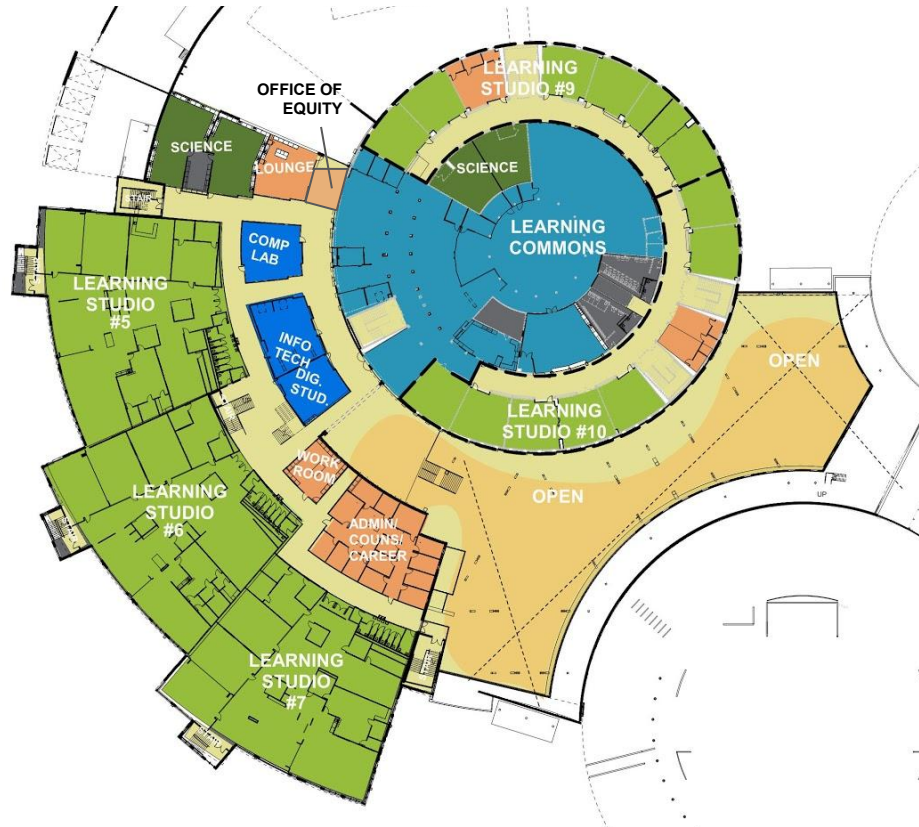
ISLANDS - SPECIALTY SPACES





WHITE BEAR LAKE AREA HIGH SCHOOL

LEARNING COMMONS PLAN

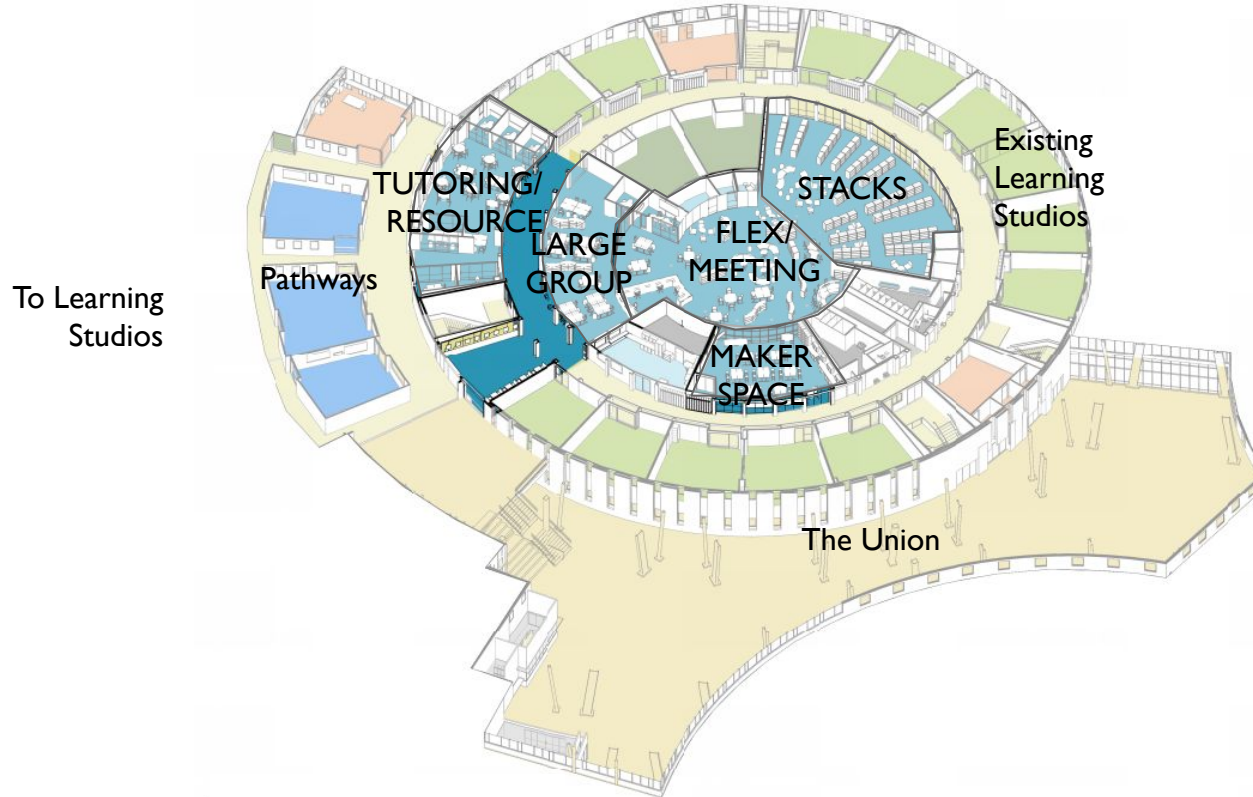


- Central hub, connecting floors and new and existing building
- Transparency and glass open to Learning Studios
- Maker Space + Broadcast Studio
- Tech Hub
- 60-person presentation area
- Resources like Tutoring and Office of Equity



WHITE BEAR LAKE AREA HIGH SCHOOL

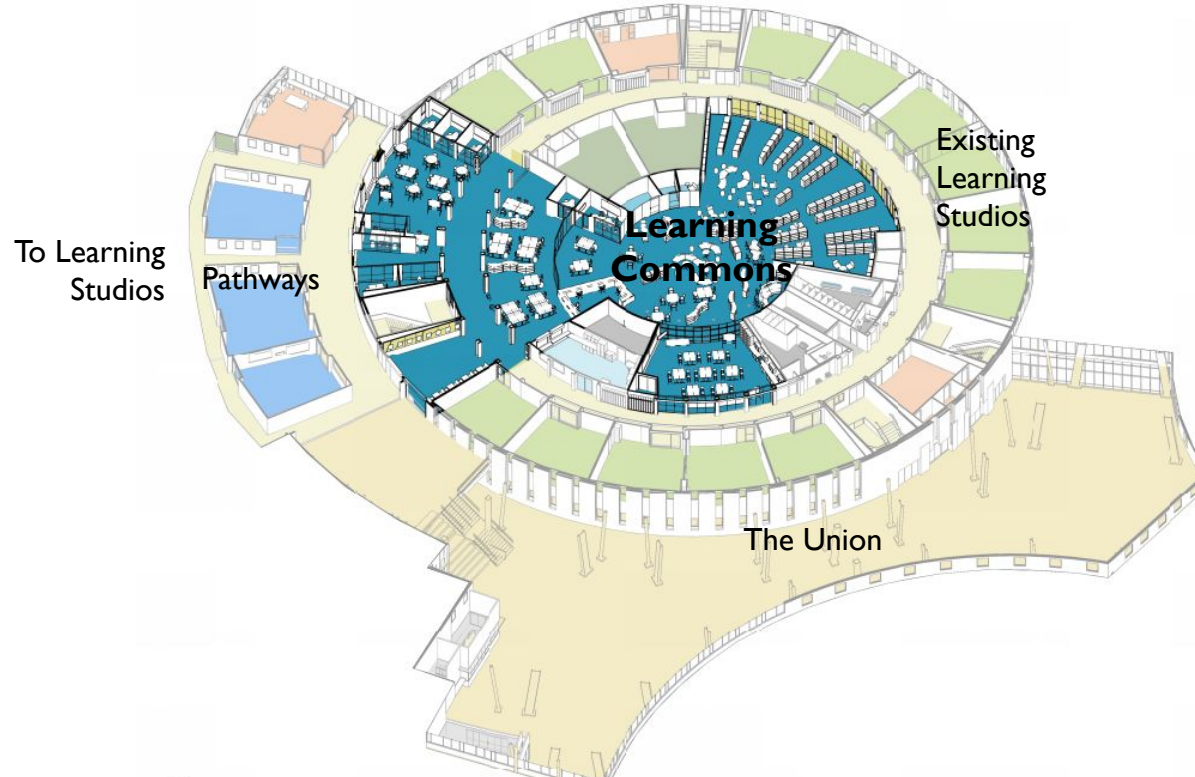
LEARNING COMMONS AXON





WHITE BEAR LAKE AREA HIGH SCHOOL

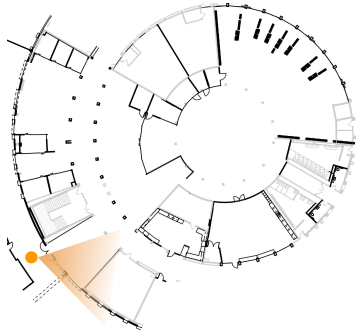
LEARNING COMMONS AXON





WHITE BEAR LAKE AREA HIGH SCHOOL

INTERIOR DESIGN



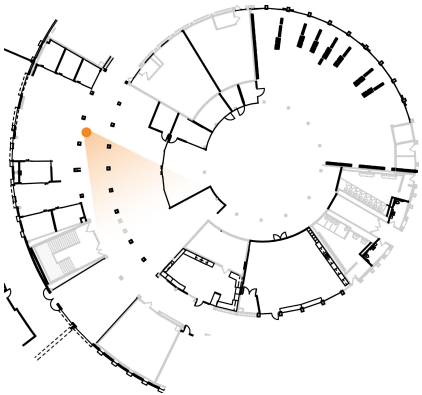


WHITE BEAR LAKE AREA HIGH SCHOOL

INTERIOR DESIGN



LEARNING COMMONS - FLEX AREA



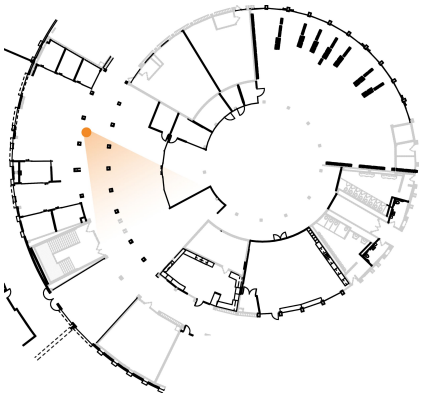


WHITE BEAR LAKE AREA HIGH SCHOOL

INTERIOR DESIGN



LEARNING COMMONS - STACKS



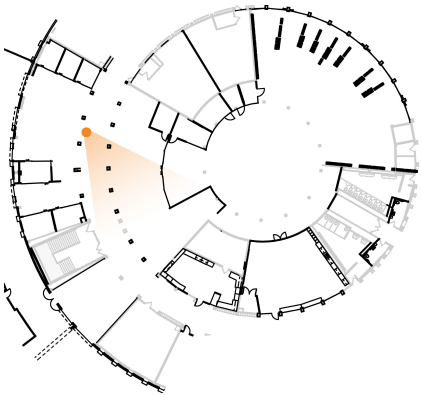


WHITE BEAR LAKE AREA HIGH SCHOOL

INTERIOR DESIGN

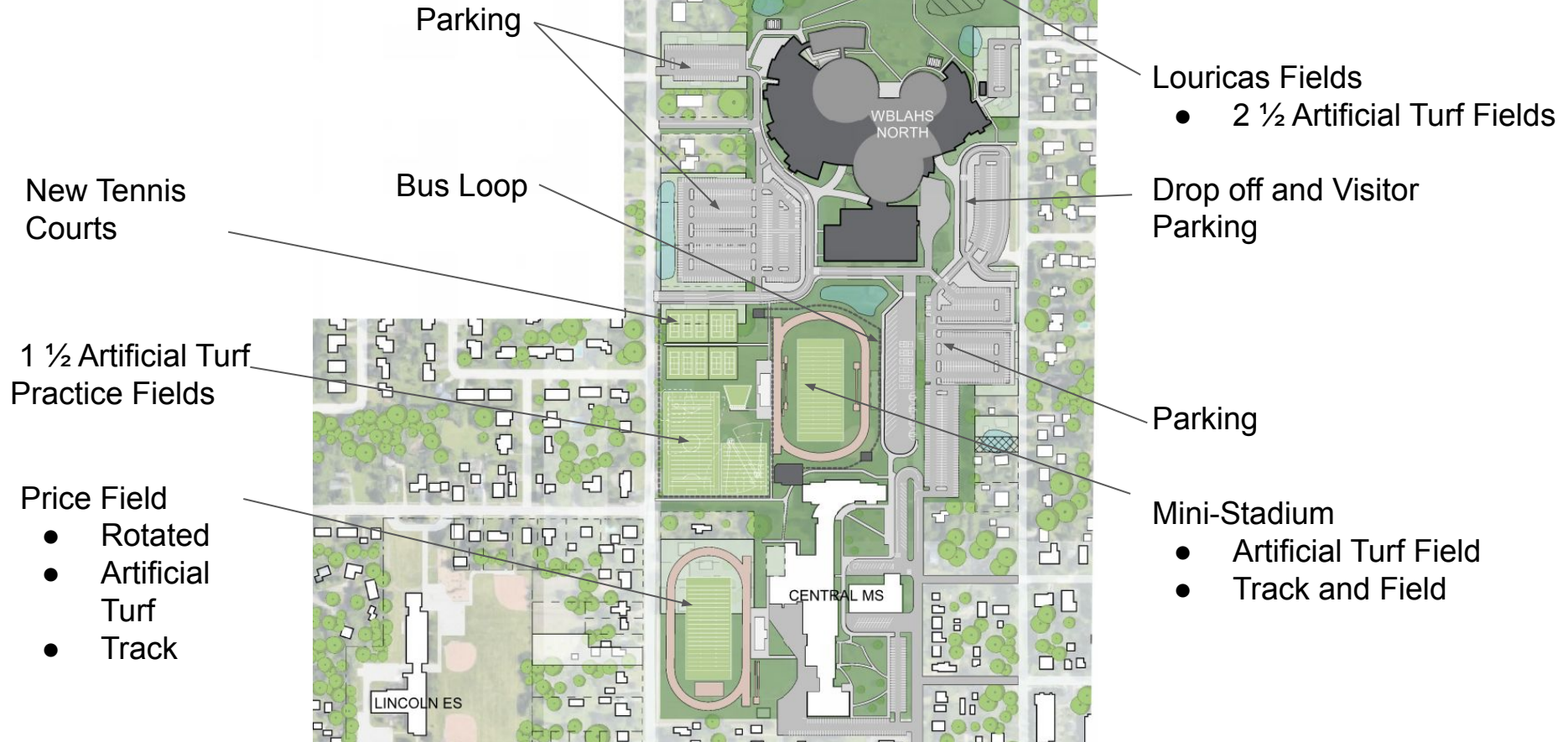


LEARNING COMMONS - CENTRAL HUB





SITE PLAN



Community Investment





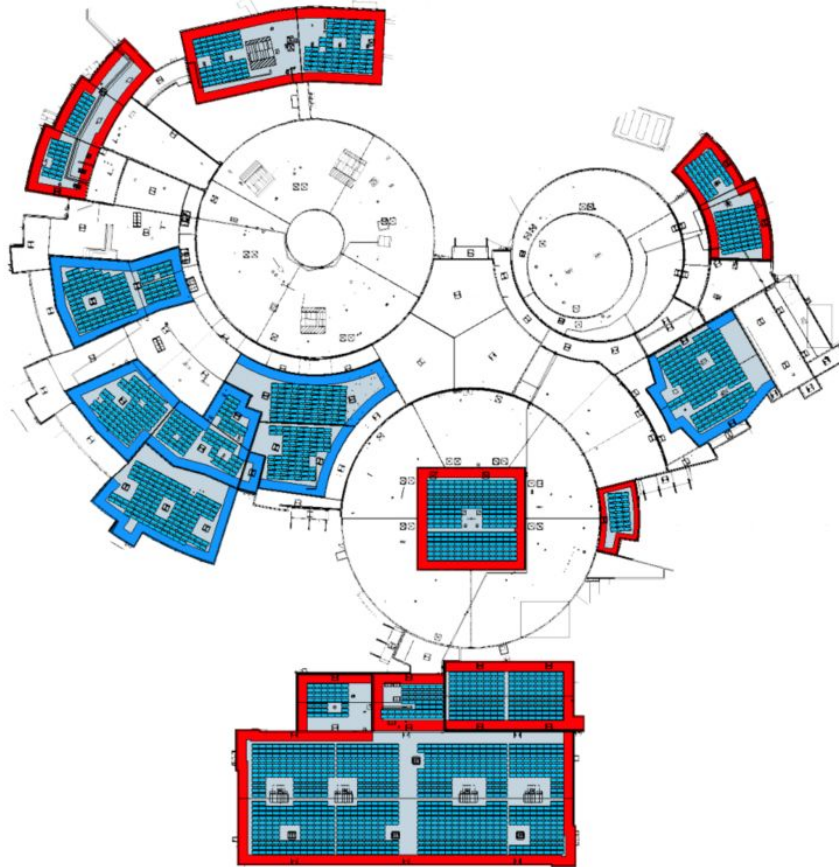
WHITE BEAR LAKE AREA HIGH SCHOOL COMMUNITY PARTNERSHIPS + COORDINATION

- WBL City Meetings
 - Planning meetings with City staff
 - Planning Commission (3/29)
 - City Council (4/13)
- Traffic Study
 - MnDOT, City of WBL, Ramsey County (Rush Line/BRT, Bruce Vento Trail)
- Arts District
 - ACE Study



WHITE BEAR LAKE AREA HIGH SCHOOL

INVESTMENTS IN COMMUNITY



SOLAR ENERGY

Next Steps



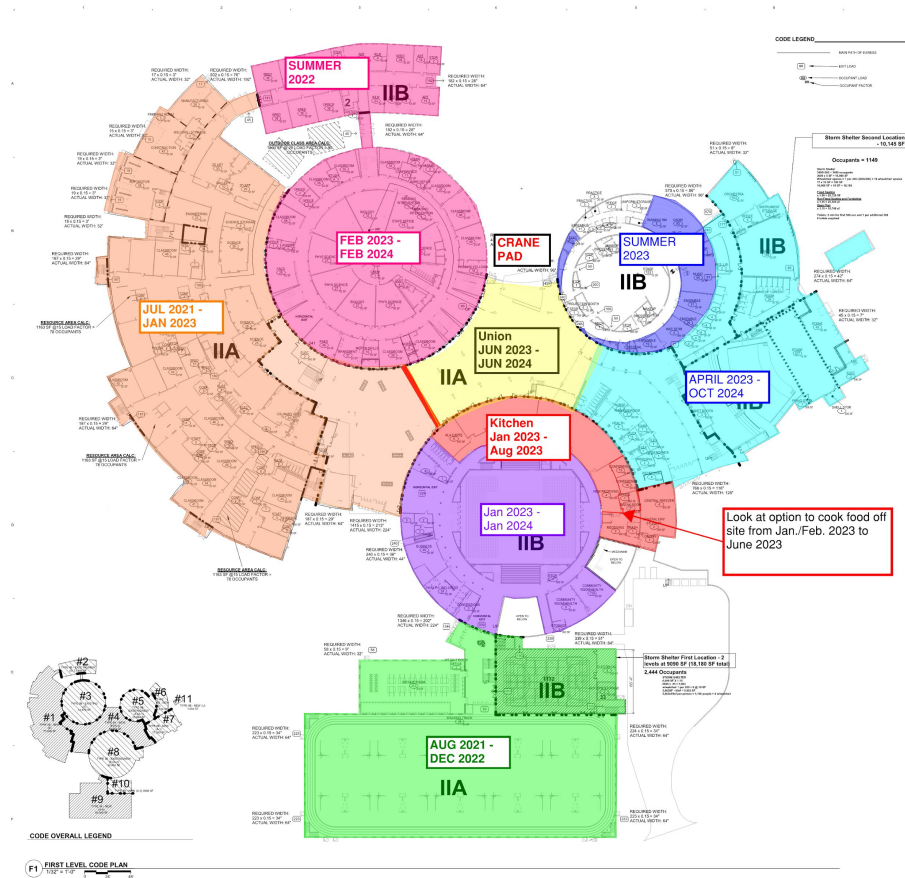


WHITE BEAR LAKE AREA HIGH SCHOOL

BUDGET OVERVIEW

- Completed estimates at 3 separate project milestones
- **Project Budget:** \$225 million, including referendum and Long Term Facilities Maintenance funding
- **Bid Date:** May 18, 2021

Referendum Projects Timeline





WHITE BEAR LAKE AREA HIGH SCHOOL

NEXT STEPS

- **Bid Day:** May 18, 2021
- **Construction Starts:** June 2021
- **Construction Complete:** October 2024

- **Fieldhouse + New Learning Studio Towers Targeted Completion:** December 2022
- **Stadium Targeted Completion:** June 2022

- **Grades 11-12 will move to the New White Bear Lake Area High School in Summer 2024!**

Project Scope:

- Additions and renovations to create a secure entry, learning commons (media center) renovations, and add classrooms to reach 1,350 student capacity, creation of flexible space
- New flexible furniture for classrooms and learning commons





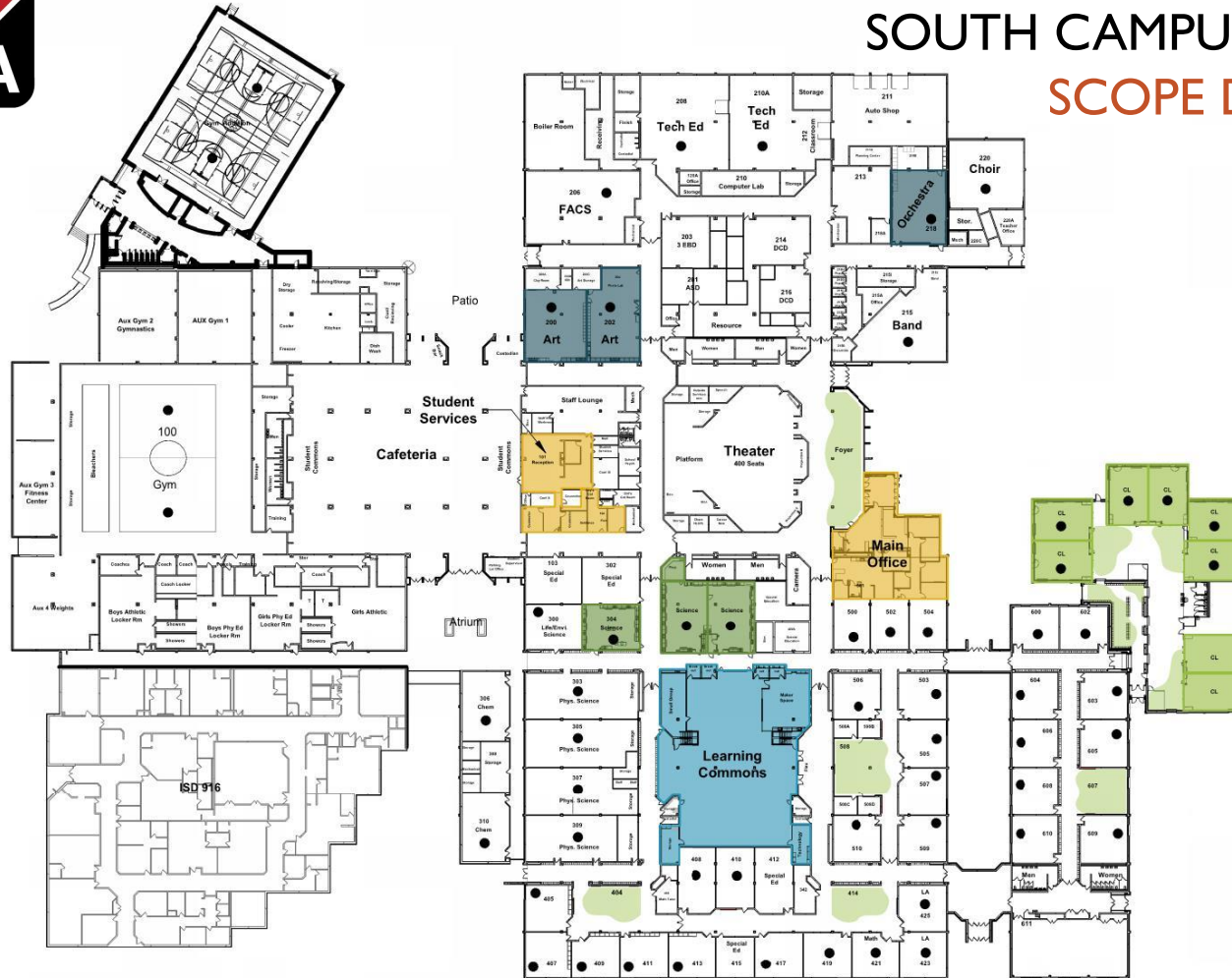
PROJECT COMMITMENTS & CRITERIA (Excerpts)

- The project should foster student agency and create a place where learners feel a part of the school.
- The design will accommodate the needs of all learners to feel safe and comfortable and have a sense of belonging.
- The design should create opportunities to be independent with appropriate support, including access to resources.
- The design should provide a variety of flexible spaces to be agile and have the ability to choose different types of spaces for different styles of learning.
- The culture of Sunrise Park and the community values multiple perspectives, cultures and experience and should be incorporated into the design.



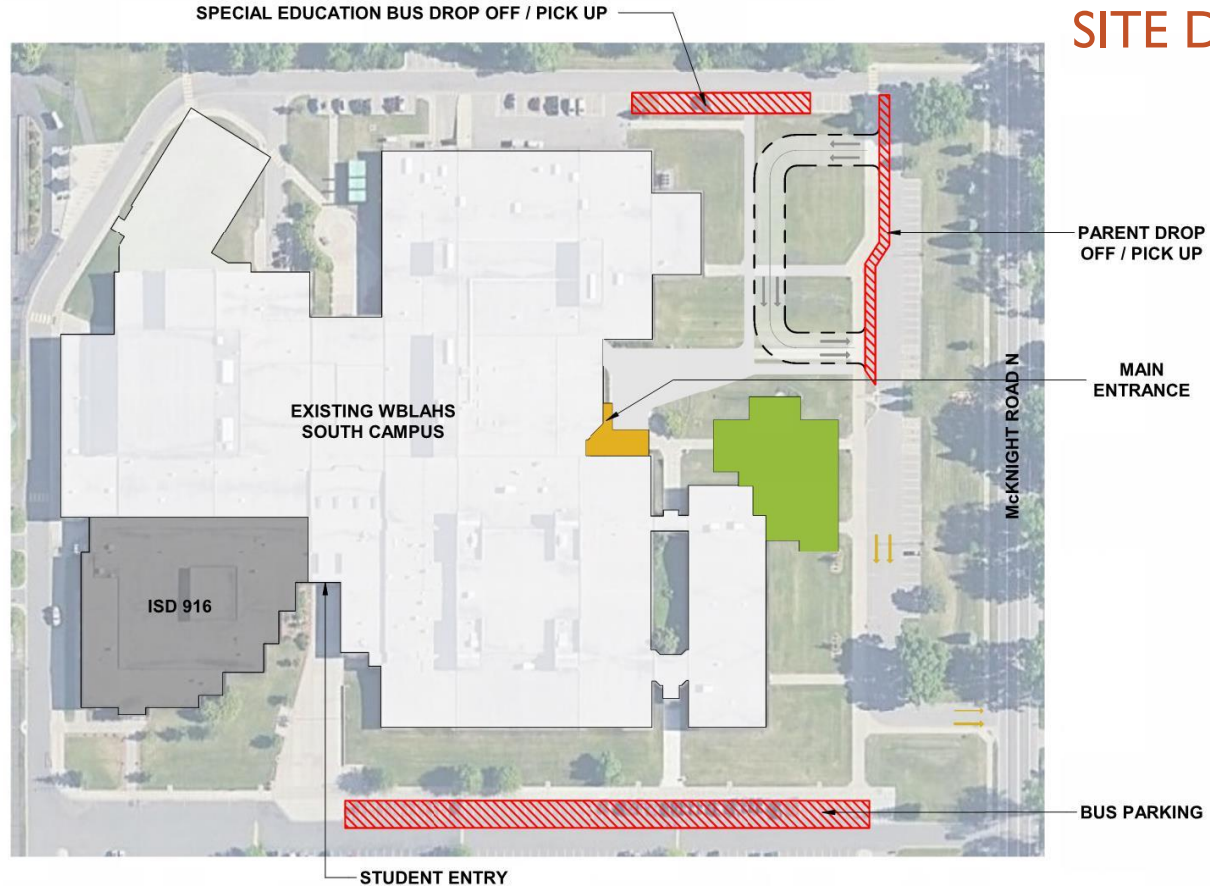
SOUTH CAMPUS PHASE II

SCOPE DIAGRAM





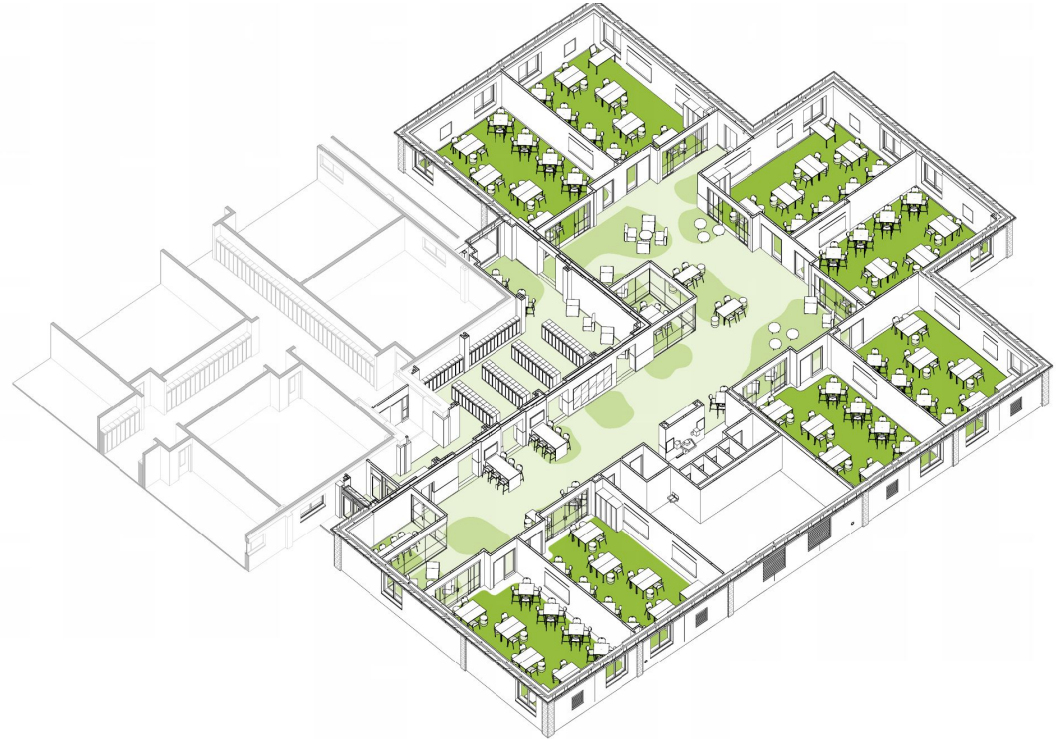
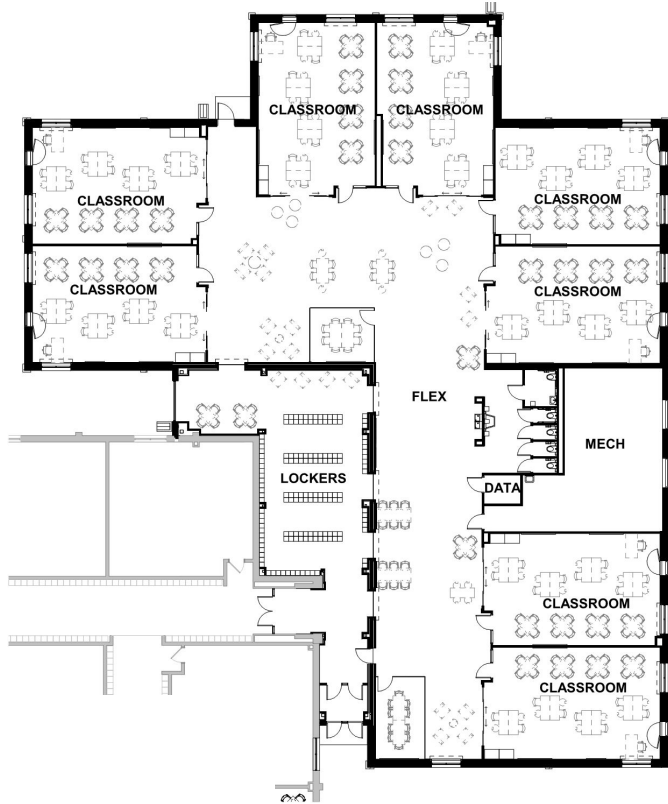
SOUTH CAMPUS PHASE II SITE DIAGRAM





SOUTH CAMPUS PHASE II

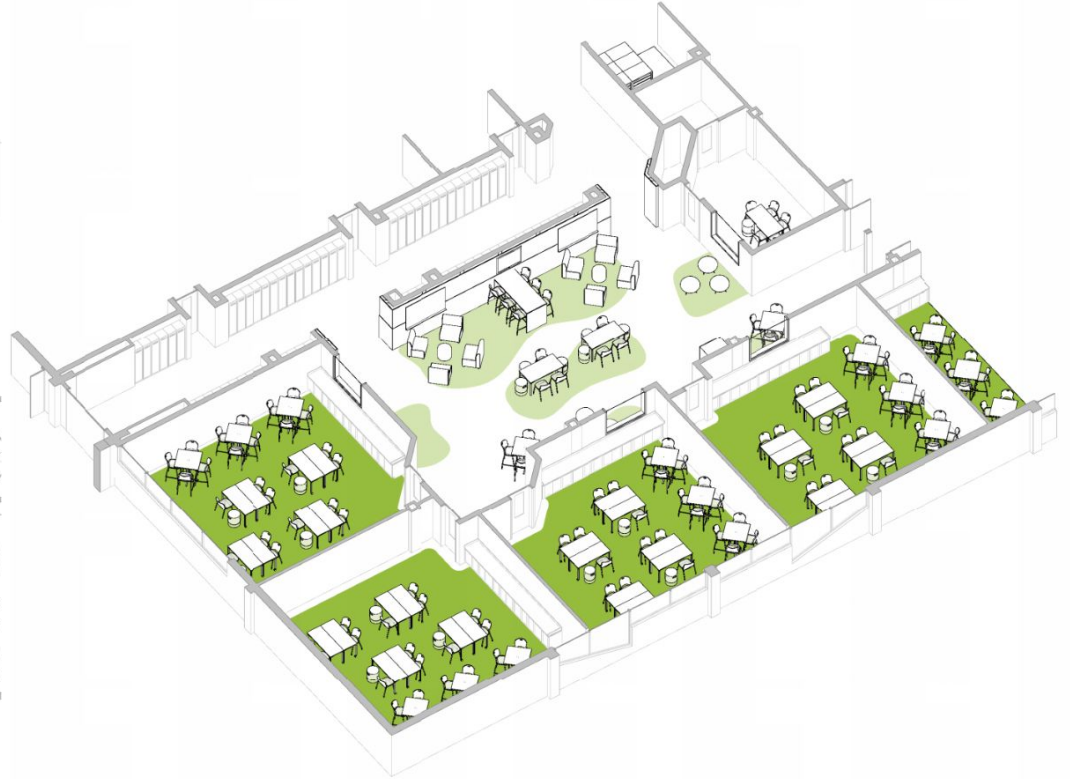
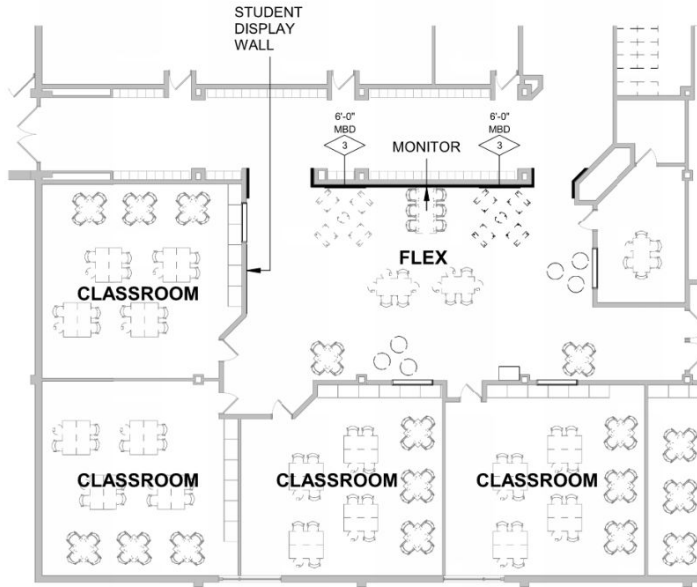
CLASSROOM ADDITION DESIGN





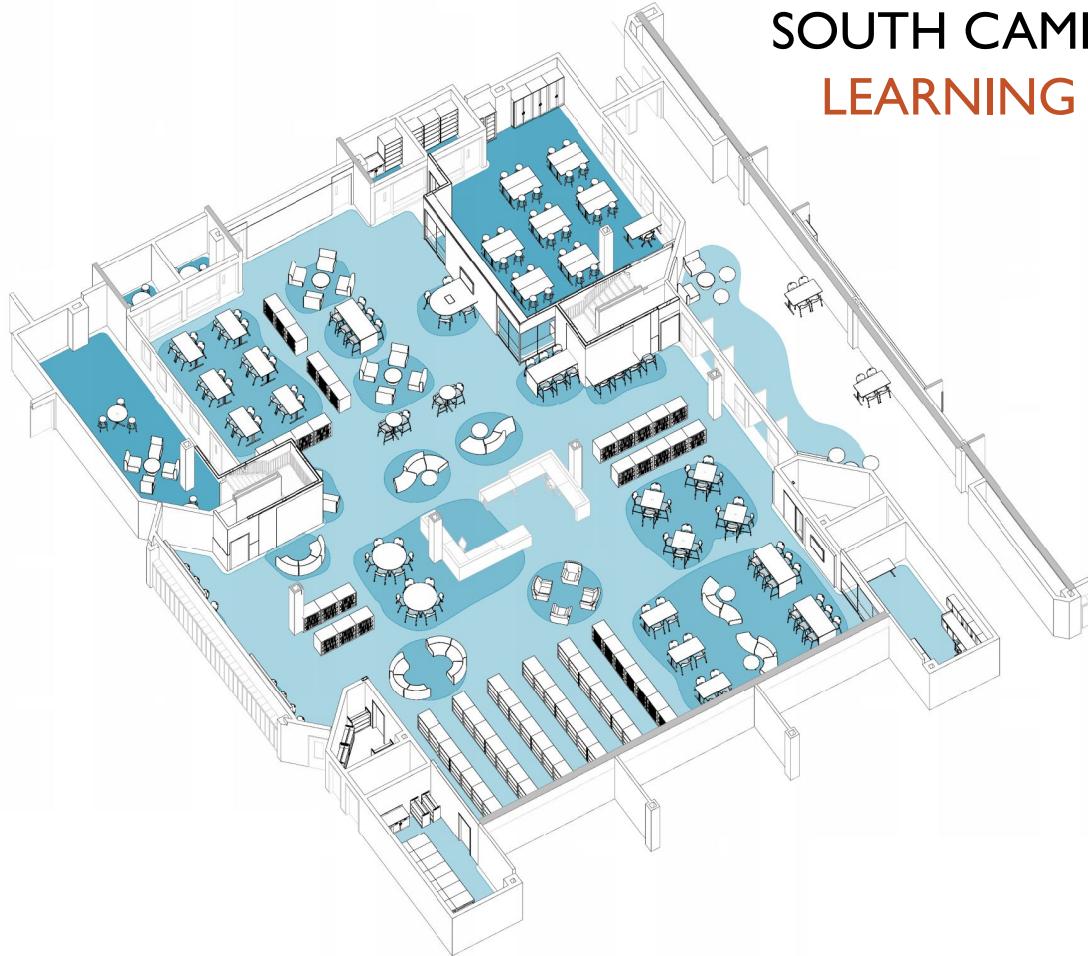
SOUTH CAMPUS PHASE II

FLEX SPACE DESIGN





SOUTH CAMPUS PHASE II LEARNING COMMONS





SOUTH CAMPUS PHASE II EXTERIOR DESIGN



MAIN ENTRY



SOUTH CAMPUS PHASE II

EXTERIOR DESIGN



ADDITIONS



SOUTH CAMPUS PHASE II EXTERIOR DESIGN



PLAZA



SOUTH CAMPUS PHASE II INTERIOR DESIGN





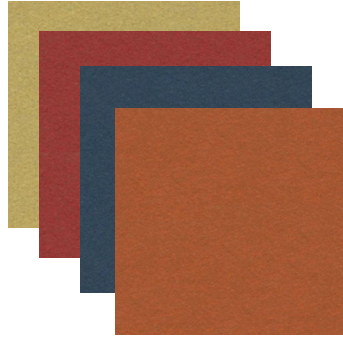
SOUTH CAMPUS PHASE II

INTERIOR DESIGN

PAINT



TACK WALL



WOOD DOORS



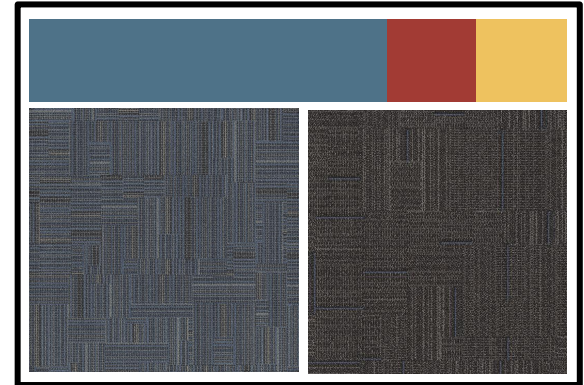
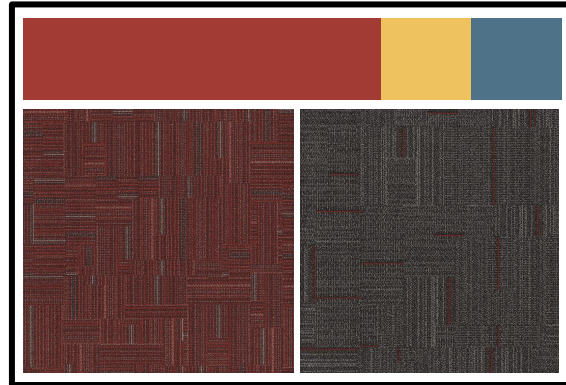
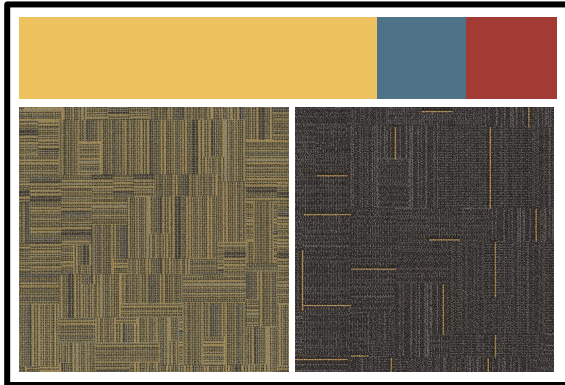
WOOD ACCENT



CARPET



TILE





SOUTH CAMPUS PHASE II INTERIOR DESIGN



MAIN OFFICE



SOUTH CAMPUS PHASE II INTERIOR DESIGN



FLEX (508)



SOUTH CAMPUS PHASE II INTERIOR DESIGN



FLEX (404)



SOUTH CAMPUS PHASE II INTERIOR DESIGN



FLEX (ADDITION)



SOUTH CAMPUS PHASE II INTERIOR DESIGN



FLEX (ADDITION)



SOUTH CAMPUS PHASE II INTERIOR DESIGN



LEARNING COMMONS ENTRY





SOUTH CAMPUS PHASE II

NEXT STEPS

- **Bid Day:** May 6, 2021
- **Board Approval** May 24, 2021
- **Budget:** \$11,500,000
- **Construction Starts:** June 2021
- **Construction Complete:** August 2022
 - **Classroom Addition Targeted Completion:** March 2022



WHITE BEAR LAKE AREA SCHOOLS



SCHOOL BOARD UPDATE

THANK YOU!



White Bear Lake
Area Schools