



WHITE BEAR LAKE AREA SCHOOLS



SCHOOL BOARD UPDATE

School Board Meeting

April 10th, 2023



White Bear Lake
Area Schools

SCHOOL BOARD UPDATE

PRESENTATION AGENDA



- Central Design Update
- Construction Updates
- Questions / Discussion

Overview of Referendum Projects Scope

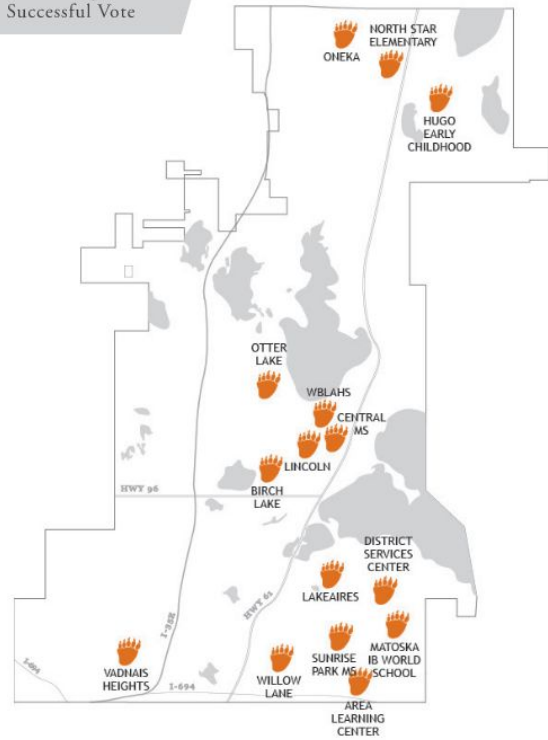


Referendum Projects Scope



WHITE BEAR LAKE AREA SCHOOLS

District Map After Successful Vote



- BIRCH LAKE ELEMENTARY**
 - Add extended day office, conference room, one new classroom
 - Updated classrooms and media center, safety/security upgrades
- LAKEAIRES ELEMENTARY**
 - Add orchestra room and freezer
 - Updated classrooms and media center, safety/security upgrades
- LINCOLN ELEMENTARY**
 - Add full size gymnasium, conference room, extended day office and cooler
 - Updated classrooms and media center, safety/security upgrades
- MATOSKA ELEMENTARY**
 - Add freezer, specialist room, extended day office, EL room
 - Updated classrooms and media center, safety/security upgrades
- ONEKA ELEMENTARY**
 - Add 5 classrooms for capacity of 720 students
 - Updated classrooms and media center, safety/security upgrades
- OTTER LAKE ELEMENTARY**
 - Add 5 classrooms for capacity of 720 students
 - Updated classrooms and media center, safety/security upgrades
- VADNAIS HEIGHTS ELEMENTARY**
 - Add freezer, extended day office, orchestra room
 - Updated classrooms and media center, safety/security upgrades
- WILLOW LANE ELEMENTARY**
 - Add orchestra room and freezer
 - Updated classrooms and media center, safety/security upgrades
- NORTH STAR ELEMENTARY**
 - New elementary school for 720 students (new site)
- CENTRAL MIDDLE SCHOOL**
 - Renovate District Office to create additional classroom space
 - Updated classrooms and media center, safety/security upgrades
- SUNRISE PARK MIDDLE SCHOOL (FORMER SOUTH CAMPUS)**
 - Addition/renovation to become a grades 6-8 MS, including additional gymnasium
 - Updated classrooms and media center, safety/security upgrades
- WBLAHS NORTH CAMPUS**
 - Addition / renovation to become single site grades 9-12 HS
 - Updated classrooms and media center, safety/security upgrades
- AREA LEARNING CENTER**
 - Kitchen improvements and renovations to create secure vestibule
 - Updated classrooms and media center, safety/security upgrades
- HUGO EARLY CHILDHOOD CENTER**
 - Convert for use as North Early Childhood Center
- DISTRICT SERVICES CENTER (FORMER SUNRISE PARK)**
 - Renovation to convert for use as South Early Childhood Center, District Office, Senior Center, and Transition Education Center
- TRANSPORTATION / MAINTENANCE FACILITY**
 - New transportation / maintenance facility (Location TBD)

- District-wide additions and renovations to accommodate projected enrollment growth
- Safety and security improvements
- Deferred maintenance projects
- Classroom and building updates to create flexible learning spaces



REFERENDUM PROJECTS UPDATE

STATUS OF REFERENDUM PROJECTS

Referendum Projects Completed:

- ALC Security Renovation
- Lincoln Elementary School
- Matoska Elementary School
- Vadnais Heights Elementary School
- Willow Lane Elementary School
- New Transportation / Maintenance Facility
- South Campus Phase I Addition (Gym)
- New Elementary School
- South Campus Phase II Addition (Classrooms / Office)
- Phase I - New Classroom Flexible Furniture
- Birch Lake Elementary School
- Lakeaires Elementary School
- Phase II - New Classroom Furniture

Referendum Projects Completed (Cont.):

- Otter Lake Elementary School

Referendum Projects Bid / in Construction:

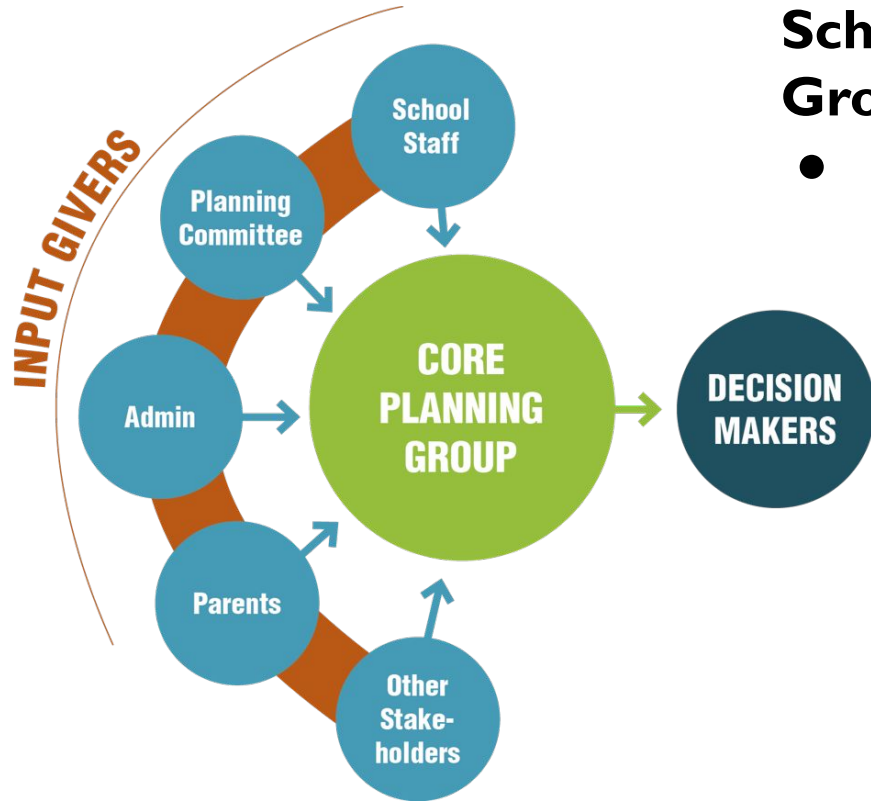
- White Bear Lake Area High School
- Oneka Elementary School
- ALC LTFM

Referendum Projects in Design:

- Central Middle School
- Sunrise Park (future District Services Center / TEC / Early Childhood)

Referendum Projects Remaining:

- Hugo Elementary (Future Early Childhood site)

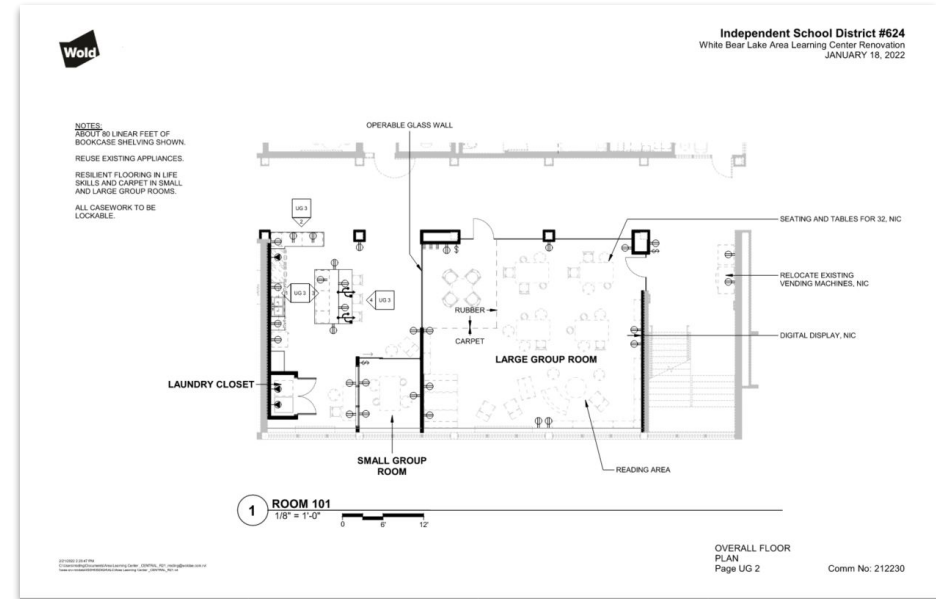


Schematic Design: Core Planning Groups

- Develop Core Planning Group for each individual building
 - Tours (Common Language)
 - Consensus on Criteria and Guiding Principles
 - Building a Common Diagram
 - Renderings / Visuals
 - Final Schematic Design

Design Development: User Group Process

- Involve Building Staff & Users in Details
- Every room impacted
- Builds ownership in the project
- No limit to number of meetings
- Detailed information for coordination



Design Update:

Central MS





Central Middle School

PROJECT SCOPE & SCHEDULE

Project Scope:

- Renovate District Office to create additional classroom space
- Gym Addition
- Kitchen and Cafeteria Renovation/Expansion
- Updated classrooms, Media Center, and flex areas
- Safety/security upgrades
- LTFM upgrades
- \$33,126,415 total project cost

Schedule:

- Schematic Design (Core Planning Group): August 2022
- Design Development (User Groups): September 2022
- Construction Documents: January 2022
- Bidding: March 2023
- Construction starts: Summer 2023
- Projected Completion: Fall 2025



Central Middle School

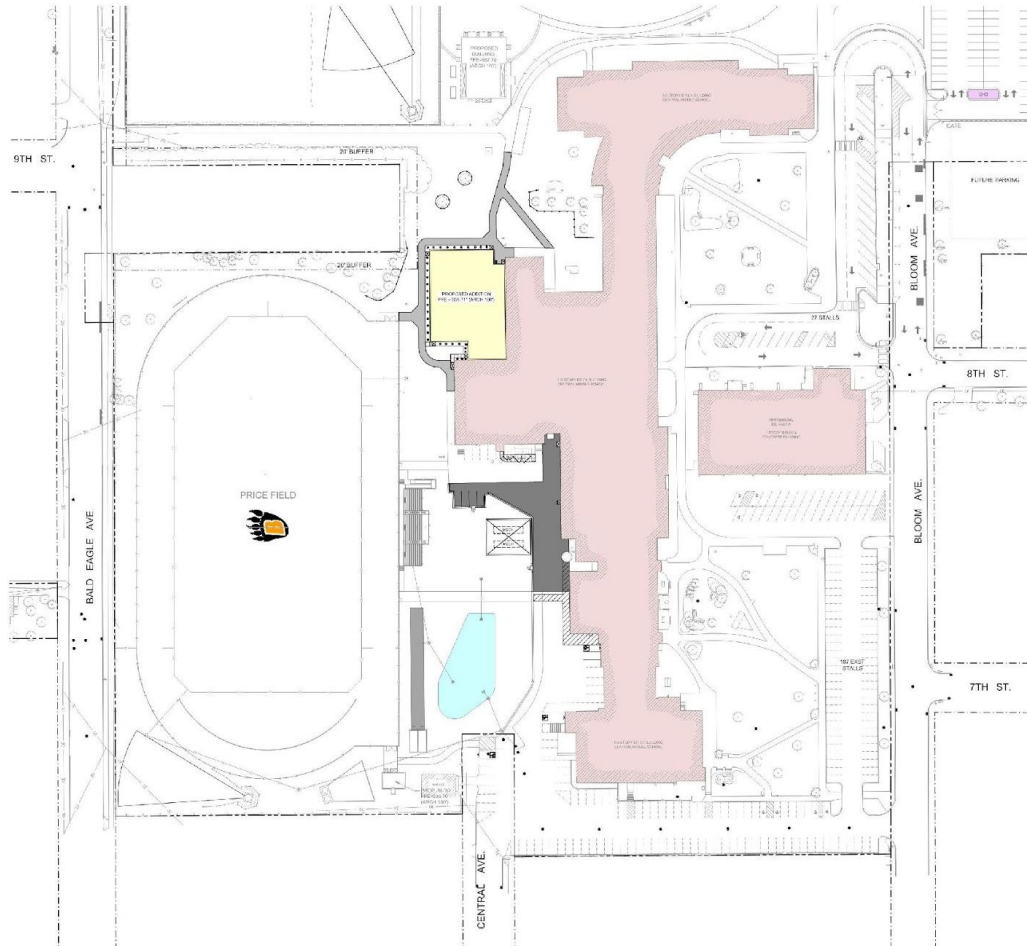
PROJECT SCOPE & SCHEDULE

Design Criteria:

- The building should support community use while creating the ability to secure areas of the building. (Gym, cafeteria, restrooms, auditorium, some classrooms)
- Increase the utilization of the existing Commons.
- The commons should be utilized as a flexible student space including furniture to support this.
- The design should include infrastructure to support current and future technologies.
- A space for larger groups within the Learning Commons should be included as well as small group spaces for break out groups or individual work.
- Utilize the existing Board Room for additional fitness space.
- Display opportunities for student work should be incorporated into the design.
- Restrooms should be located near the cafeteria.
- A centralized staff lounge should be large enough to accommodate up to 25 staff, and have close proximity to the cafeteria.
- Learning Commons should support a 21,000 book collection
- Consider custodial and maintenance needs with the new designs.



White Bear Lake
Area Schools



Central MS

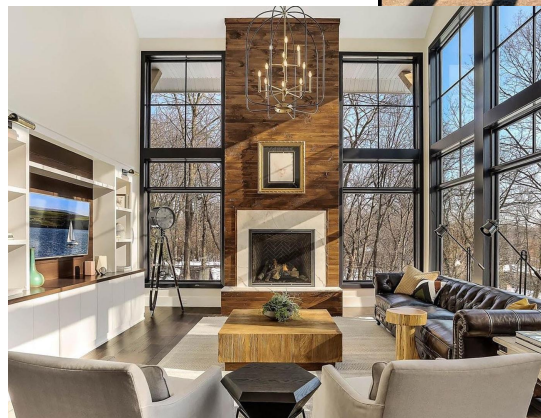
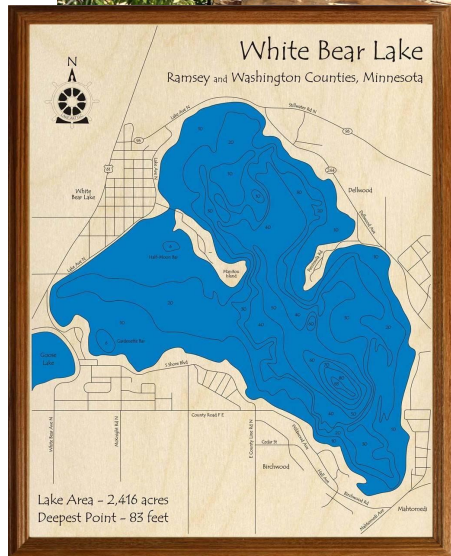
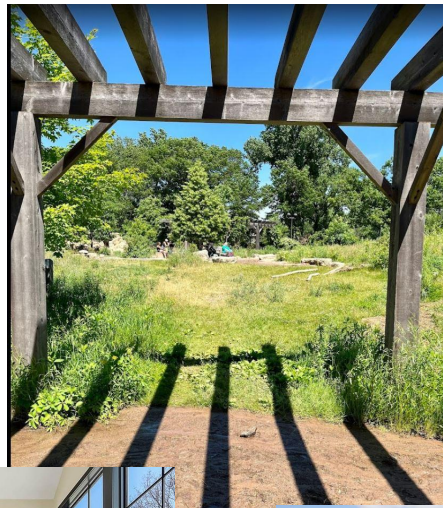
SITE PLAN



White Bear Lake
Area Schools

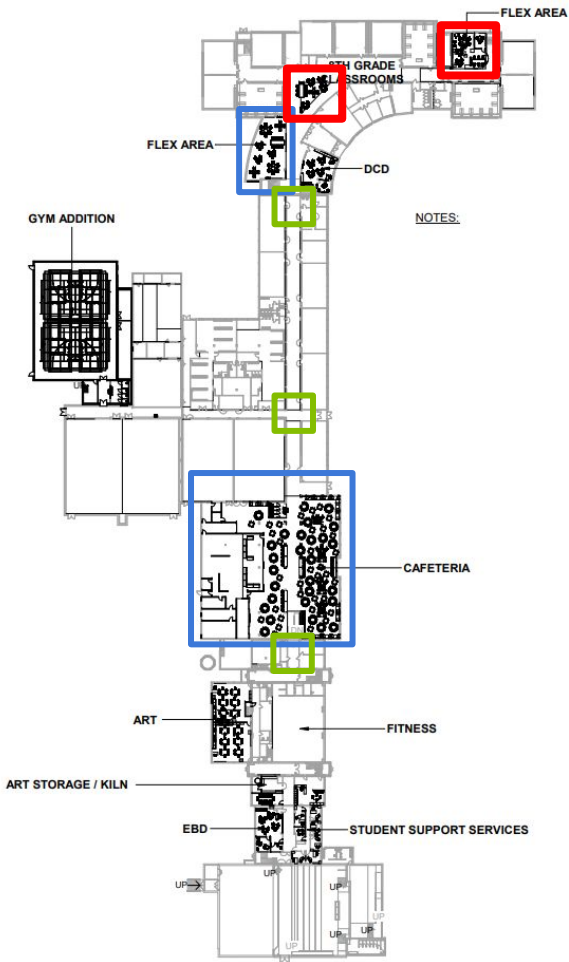
Central MS

DESIGN INSPIRATION





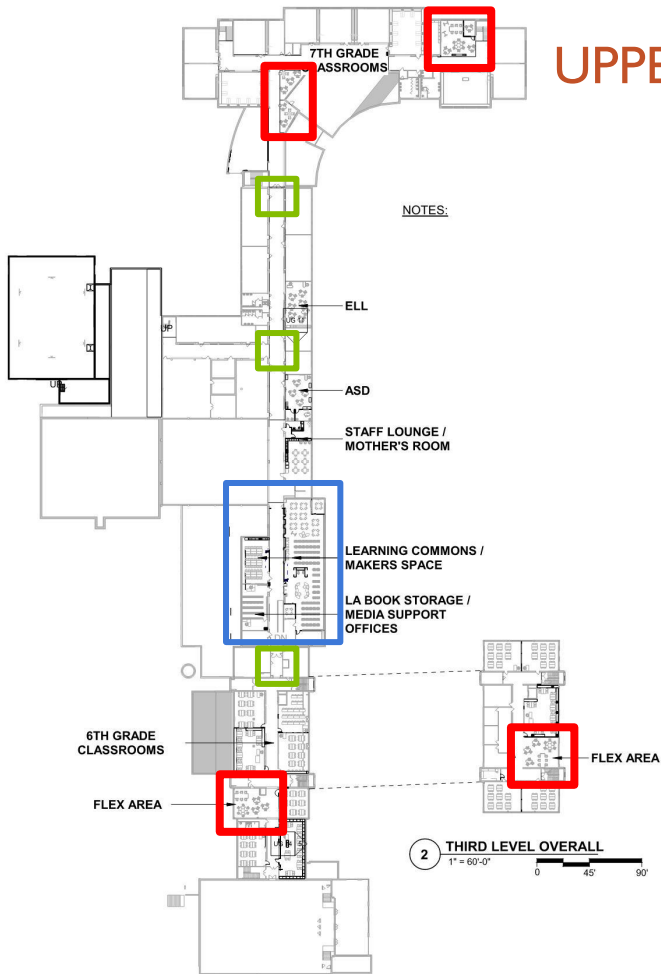
MAIN LEVEL FLOOR PLAN



- HOME
- LAKE
- TRAIL



UPPER LEVEL FLOOR PLAN



- HOME
- LAKE
- TRAIL



White Bear Lake
Area Schools

Central MS RENDERINGS



Commons (Lake)



White Bear Lake
Area Schools

Central MS RENDERINGS



Cafeteria (Lake)



White Bear Lake
Area Schools

Central MS RENDERINGS



Learning Commons (Lake)



White Bear Lake
Area Schools

Central MS RENDERINGS



Corridor (Trail)



White Bear Lake
Area Schools

Central MS RENDERINGS



Flex Area (Home)



White Bear Lake
Area Schools

Central MS RENDERINGS

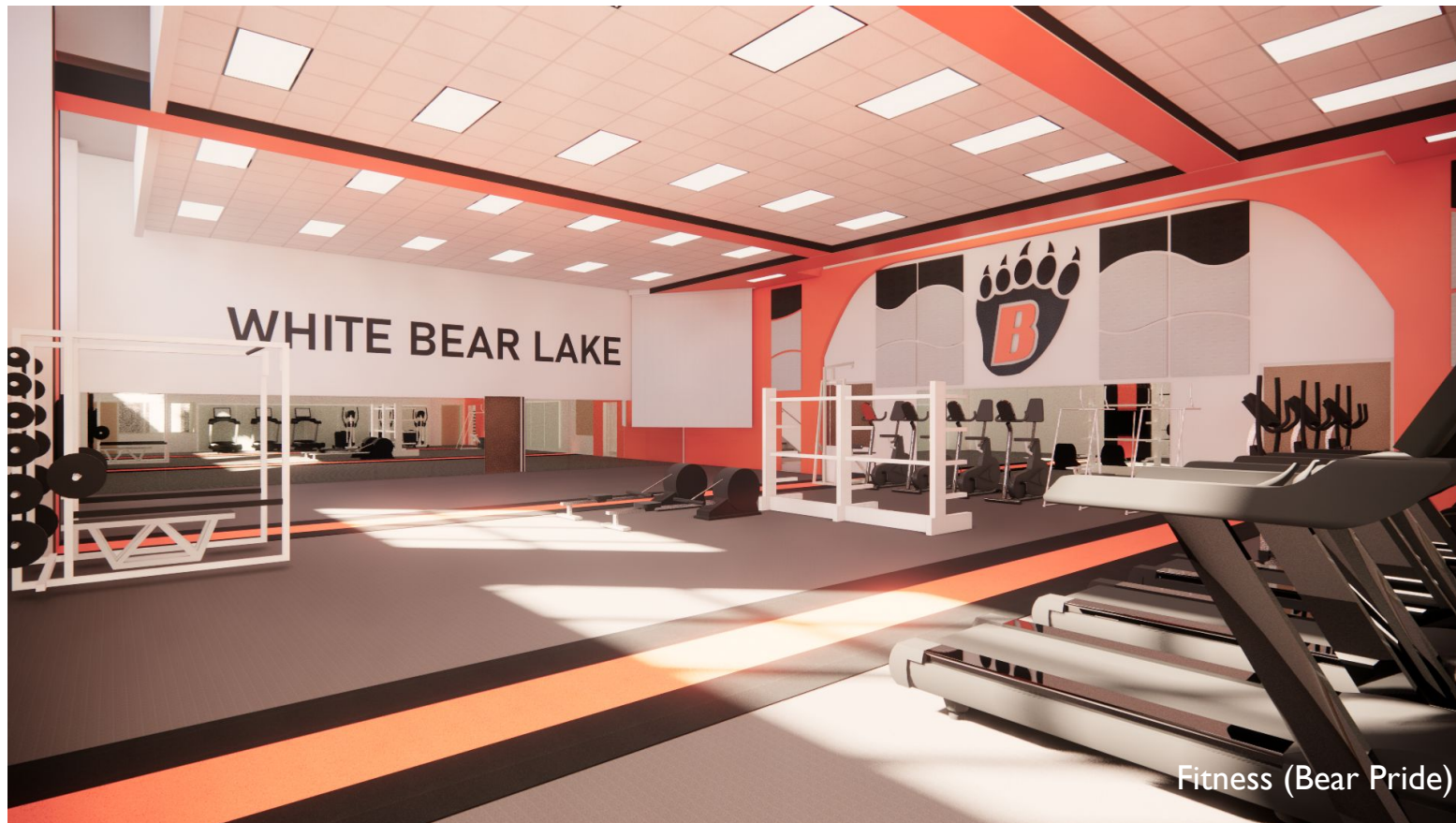


Flex Area (Home)



White Bear Lake
Area Schools

Central MS RENDERINGS



Fitness (Bear Pride)



White Bear Lake
Area Schools

Central MS RENDERINGS



Fitness (Bear Pride)



White Bear Lake
Area Schools

Central MS RENDERINGS



Gym (Bear Pride)



White Bear Lake
Area Schools

Central MS RENDERINGS



Gym (Bear Pride)

Central MS EXTERIOR CONCEPTS

Lightness and Horizontality

*Brick Type: Beige Tones

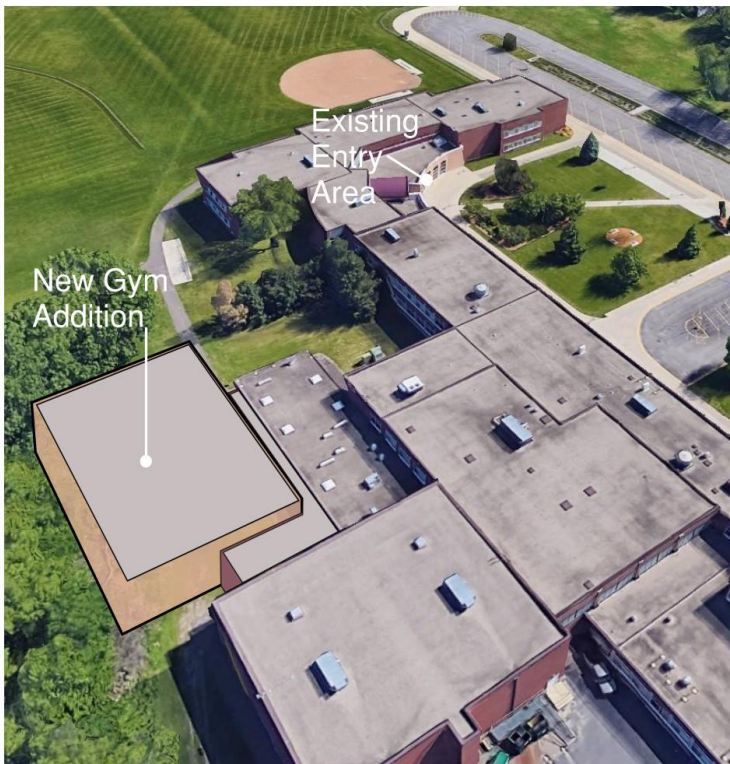
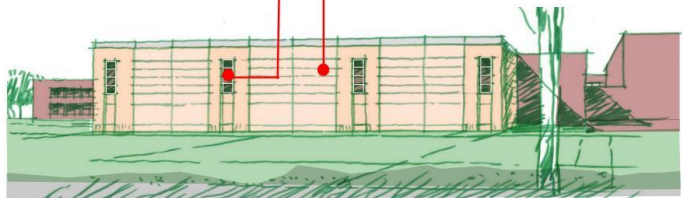


*Brick Detailing-Horizontal
Brick Quoining and Light
Gray Base with Soldier
Coursing



*Precast Panels- Beige Tones
+ Matching Horizontal Joints

*Glazing- Vertical Windows
with Horizontal Mullions
matching existing





White Bear Lake
Area Schools

Central MS

EXTERIOR CONCEPTS



Gym Addition



White Bear Lake
Area Schools

Central MS

EXTERIOR CONCEPTS



Gym Addition



WHITE BEAR LAKE AREA SCHOOLS



SCHOOL BOARD UPDATE

THANK YOU!



White Bear Lake
Area Schools