

WHAT DOES OUR RETURN TO SCHOOL LOOK LIKE?

HAND SANITIZING
Hand sanitizing
will be available
at entry points to the
school and inside class-
rooms.

For students who opt in and for well students who are quarantined, we will offer distance learning

Hand sanitizing dispensers will be available at all entry points to the building and inside classrooms

We will be doing our best with our existing ventilation systems to increase fresh air and accelerate filtration changes per CDC and MDH guidance

Signs will be placed around the school to remind students and staff to practice healthy habits that prevent the spread of germs

Teachers will encourage students to frequently wash their hands during the school day

fewer desks in each classroom will allow teachers to arrange their rooms differently. There will be at least 6' distance between desks and tables within the classroom.

Teachers will assign seats and place desks and tables in rows. Shared learning tools and materials will be limited

Frequently touched areas such as chairs, desks and doors will be sanitized nightly

Staff will receive training about maintaining safe environments, COVID symptoms and teaching techniques while maintaining a safe physical distance

Per the Governor's mandate, all people who are able to wear a face covering need to do so inside school buildings

Instruction for some specials/electives may take place inside the classroom

WHAT DOES OUR RETURN TO SCHOOL LOOK LIKE?

WINDOWS

To increase the flow of fresh air circulation, we will open windows when possible

HAND SANITIZING

Hand sanitizing dispensers will be available at all entry points to the building and inside classrooms

PLAYGROUNDS

Outdoor areas such as playgrounds will be open. Students will be reminded to stay 6 feet apart. Additional cleaning and sanitizing will take place on these hard surfaces

WATER FOUNTAINS

Water bottles can be refilled, but drinking fountains will be turned off

OUTDOOR SPACES

Fields, courts and open areas will be used as additional learning spaces when appropriate

FLOORING

Hard surface flooring will be sanitized with an antimicrobial coating

CONTROLLED TRAFFIC PATTERNS

School leaders and teachers will work together to schedule the movement of classes in the building. Arrows for traffic patterns will be in hallways

FOOD SERVICE

Meals will be delivered to classrooms and students will eat lunch at their desk, while keeping a safe distance from others

ISOLATION ROOMS

A dedicated space will be available to individuals displaying symptoms to be isolated until they can be picked up

MULTIPLE ENTRY POINTS

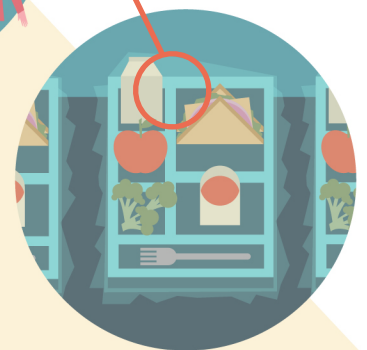
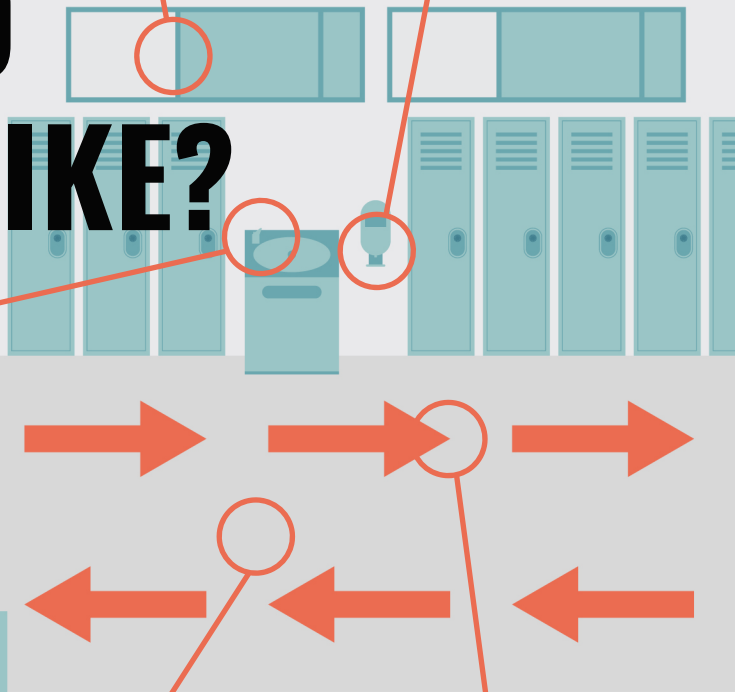
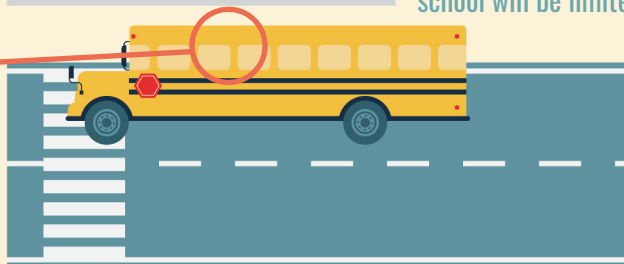
Students will be assigned specific doors to enter to reduce bottlenecks and maintain physical distancing

REDUCE CONGREGATION

We will reduce the number of people gathering in areas like the cafeteria, main office and locker rooms. There will be no large assemblies. Visitors to the school will be limited

BUS

Seats will be assigned and the loading and unloading of students will be coordinated to maintain physical distancing



WR

624